

# Ondina



**ULTRASOUND**  
**HYBRID IA Ready** 



HOSPITAL: DS  
USER: RICHARD

PATIENT: RICHARD ETIENNE  
EXAM: 08

MARDI 09, 2017  
15:10

Ondina

Patient

Settings

THYROID

Freq 8,0 MHz

- +

WIDE BAND

Depth 75 mm

- +

TRAPEZOID OFF

COMPOUND OFF

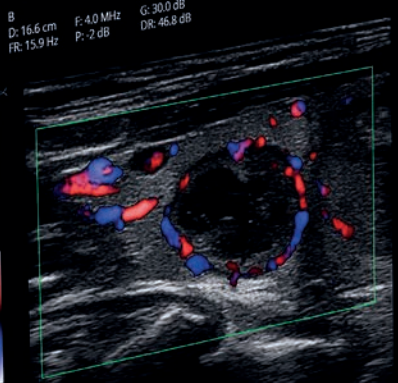
PANORAMIC

Save Settings

F1 = Contrast 18  
F2 = RTAS 0  
F3 = Scroll 0

Dual View

Advanced



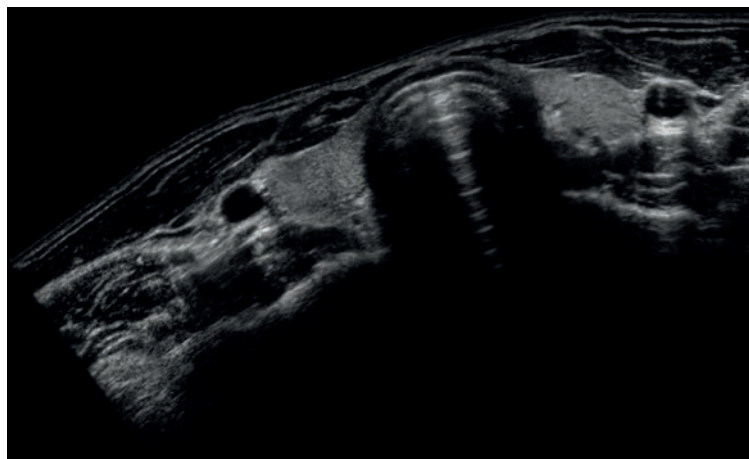
# ***Major technological advances in portable ultrasound***

The new Ondina portable ultrasound system is part of the range of Sonoscanner ultrasound systems, recognized worldwide for their excellence. It constitutes a concentration of technological advances serving the medical profession.

The first ultrasound machine to offer a touch screen associated with a trackball keyboard, the Ondina ultrasound machine has a 15" full HD screen. It also has many exclusive innovations, in particular: unique 3D / 4D display with light rendering and volume rotation, elastography for better risk estimation and real-time panoramic imaging to extend the field of view.

The Ondina ultrasound machine enables the medical profession to benefit from all the power of artificial intelligence. Drawing on a library of thousands of nodule and tumor images, it facilitates diagnostics by automating essential measurements and autonomously detecting nodules.

Developed by doctors and for doctors, it offers HD images, innovative features, customizable settings and much more, in a portable format enabling it to integrate perfectly into the daily work of the medical profession.



# Technical characteristics

## CLINICAL APPLICATIONS

- Radiology
- Obstetric
- Gynecology
- Cardiology
- Soft parts
- Musculoskeletal
- Rheumatology
- Anesthesia
- Urology
- Vascular
- Abdomen
- Pediatrics
- Emergencies
- etc.

WEIGHT: 4.6 KG

DIMENSIONS:  
37 X 29 X 7 CM

TOUCH SCREEN:  
HD 15" LCD

## GENERAL INFORMATION

- HD 15" LCD touch screen
- Weight: 4.6kg
- Dimensions: 37 x 29 x 7 cm
- Rechargeable battery.
- Autonomy: 1.5h in operation
- Customizable settings
- Quick start, in 20 seconds
- Silent: less than 36 dB
- One-click probe change
- Storage capacity: 1 TB SSD (images, cine loop)
- 2 USB 3.0 ports
- Ethernet port
- HDMI output for replication on an external screen
- Dedicated trolley, ultra manoeuvrable

## IMAGING MODES

### MODES

- B Mode (2D)
- TM Mode
- Duplex Mode
- Triplex Mode

### DOPPLER

- Pulse Doppler (PW)
- Color Doppler
- Energy Directional Doppler
- Continuous Doppler Option (CW)

### IMAGERINGS

- Tissue Harmonic Imaging
- Trapezoidale Imaging
- 30 Mhz probs : very superficial imaging

### OPTIONS

- Panoramic
- Elastography
- 3D / 4D option

## ARTIFICIAL INTELLIGENCE

- Automatic detection of nodules
- Automatic detection of the bladder
- Assistance and automation of measurements

## REMOTE-OPERATION

- Expert station for full control of the ultrasound system and the probe
- Virtual probe for remote control
- Remote real-time visualization
- Secure communication
- "Covotem" compatible

## TREATMENTS AVAILABLE DURING THE TEST

- Dynamic Optimization of the stepped gain
- Selection of the acquisition frequency in BW, Pulsed Doppler and Color
- Adjustment of the number and the position of the focal length
- Speed scale
- Automatic Image adjustment in on

## TREATMENTS AVAILABLE AFTER ACQUISITION

The numerous retrospective settings are available on the Ondina enable you to carry out a new test from frozen or recorded images as well as on video sequences.

- General and depth gain
- Color and Doppler gain
- Baseline Adjustment
- Dynamic Contrasts
- Measures, calculations
- Texts, Annotations, bodymark
- Real Time Adapting Smoothing (RTAS®) to increase resolution and reduce granularity
- Continuous X32 Zoom and scrolling to adjust the field of view

Additional equipment is available/ The complete list can be viewed on our website [www.sonoscanner.com](http://www.sonoscanner.com). You can also benefit from personalized advice by contacting our experts.

Touch screen HD **15" LCD**  
User friendly  
and easy-to-use interface



Up to 3 probes connected

Dedicated height adjustable trolley

Concentrated innovation in less

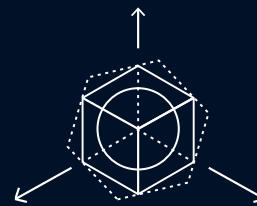
# Unparalleled image quality

*The Ondina ultrasound system combines performance, HD images and great ease of use to integrate perfectly into your medical practice.*

With the Ondina ultrasound system, you benefit from the latest innovations:



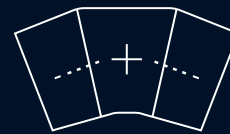
**Elastography**  
for a best estimation of risks



**Exclusive 3D / 4D option**  
with a light quality and volume rotation

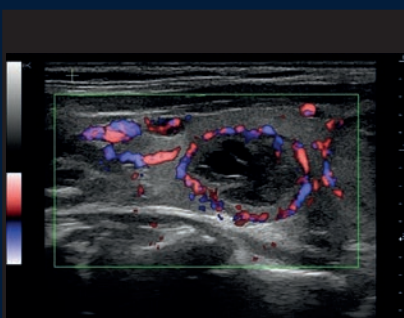


**Artificial Intelligence**  
to automate certain measures and detections

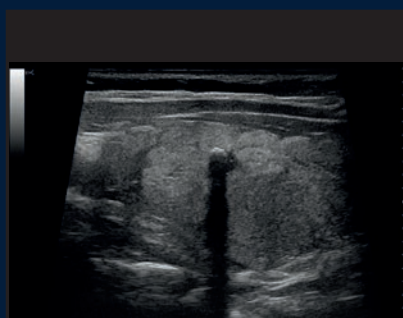


**Panoramic Imaging**  
on real time to extend the field of view

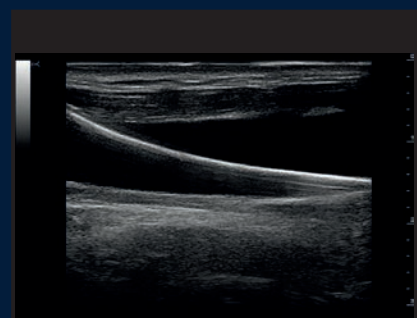
*An image quality that ensures reliable and accurate diagnoses:*



Thyroid Nodule



Thyroid Calcification



Catheter



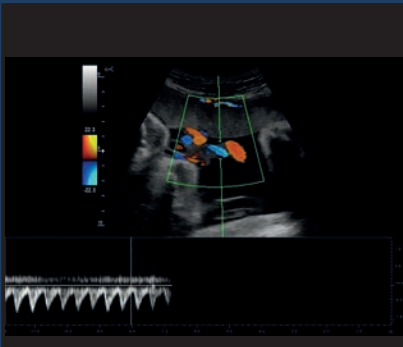
Foetal heart



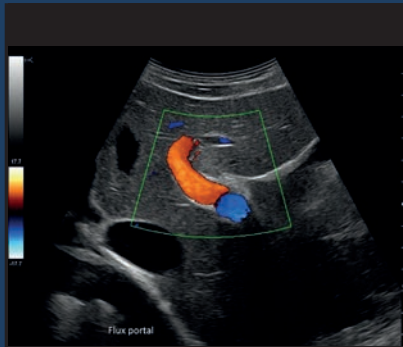
Foetus hand



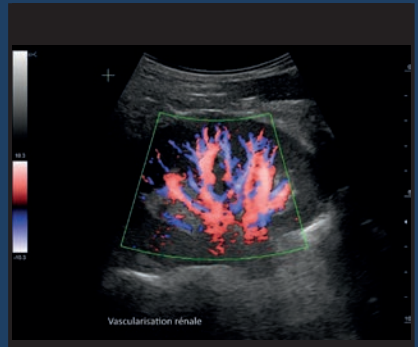
Early pregnancy



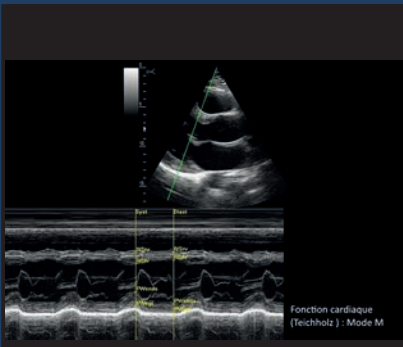
Triplex on umbilical cord



Portal vein



Kidney



TM Mode:  
Left ventricle

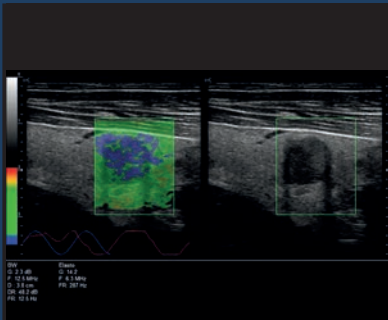


Parathyroid adenoma

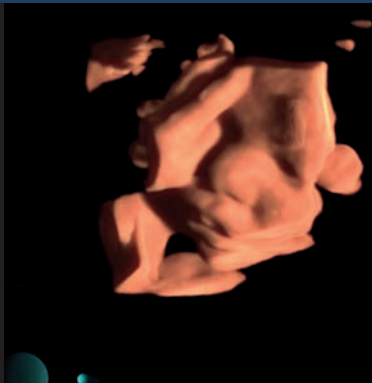


Ovarian follicles

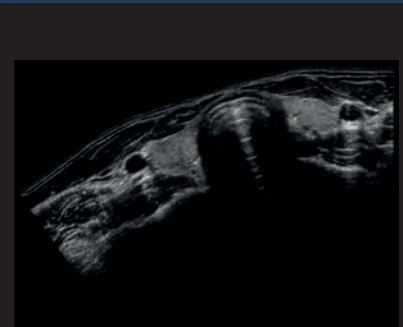
ADVANCED OPTIONS



Elastography:  
thyroid nodule












4D HD rendering



Panoramic view of thyroid lobes

# Probes

The **Ondina** ultrasound system gives you a wide choice of broadband electronic probes providing very high definition images, with significant Doppler sensitivity and a wide choice of clinical applications. Thanks to frequencies ranging from 2 MHz to 30 MHz, the Ondina ultrasound system adapts to the needs of all specialities.

	<b>HD linear probe very high frequency</b>	8 - 18 MHz	Soft parts, Vascular, Anesthesia, MSK, Sports medicine, Pediatrics
	<b>Convex probe</b>	2 - 5 MHz	Abdomen, Obstetrics, Gynecology, Anesthesia, Vascular, Emergencies
	<b>Endocavity probe</b>	5 - 8 MHz	Gynecology, Obstetrics, Urology
	<b>Phased Array sector probe</b>	1,5 - 5 MHz	Cardiology, Emergencies, Transcranial, Pediatrics
	<b>Linear probe</b>	5 - 12,5 MHz	Soft parts, Vascular, Anesthesia
	<b>3D / 4D volume convex probe</b>	3 - 6 MHz	Obstetrics, Gynecology
	<b>Convex probe</b>	2 - 6 MHz	Tele-ultrasound, Abdomen, Obstetrics, Gynecology, Anesthesia, Vascular, Emergencies
	<b>Linear probe 3D / 4D</b>	5 - 15 MHz	Tele-ultrasound, Soft parts, Vascular, Anesthesia, MSK, Sport medicine, Pédiatry
	<b>Triple probe connector</b>	The triple probe connector allows you to connect 3 probes simultaneously to the Ondina and change the probe in a second: the ultrasound system automatically recognises the type of probe connected and immediately uploads the correct settings.	



# SONOSCANNER

## support, service & training

*To allow you to concentrate on your practice and to support you in your diagnoses, we are committed to offering you an optimal level of service as well as a tailor-made training offer.*



### Support for getting started:

Our engineers are present during the delivery of your ultrasound system and train you in its use. You are thus operational on your ultrasound system in a few hours and you can immediately integrate it into your daily practice.



### Customer Service

Customer service engineers are available to answer all your questions, in terms of settings, implementation, use, etc. They remain at your disposal on a daily basis, by email and by telephone.



### Maintenance and upkeep

We regularly carry out remote maintenance operations to guarantee the performance and longevity of ultrasound scanners. Software updates are carried out remotely to regularly benefit from the very latest Sonoscanner technological innovations.



### Service + Offer

Our Service + offer guarantees you efficient use of your ultrasound system. Telephone training provided by our engineers enables you to take full advantage of the capabilities of your ultrasound system and the rapid repair or loan service ensures that you always have a high-performance ultrasound system, even in the event of breakage.



### Sonoscanner Academy

With the Sonoscanner Training Academy, you train efficiently in ultrasound, at your own pace. The Academy website enables you to watch over 50 hours of training videos. The webinars and face-to-face workshops organized monthly enable you to train with doctors, experts on the subject.

# Our product lines

Sonoscanner designs, manufactures and distributes a complete range of ultraportable, portable and stationary ultrasound system to adapt to the needs of each doctor.

## Orcheo XQ

STATIONARY



## Orcheo LITE

PORTABLE



## U-Lite

ULTRAPORTABLE



## T-Lite

ULTRAPORTABLE



# Sonoreplay

*Store your images and videos and generate reports automatically, wherever you are.*

*With Sonoreplay, you have a secure cloud space dedicated to storing images and exams. Sonoreplay is accessible via the internet and available at any time, regardless of the equipment used: desktop, laptop, tablet, etc.*

Edits your reports fully and automatically

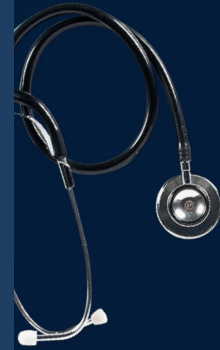
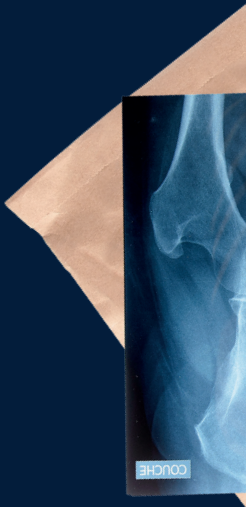
Manage your patients easily

Stores your images and videos completely securely

Access all your data, from any device connected to the Internet



[www.sonoreplay.com](http://www.sonoreplay.com)



# The passion of the ultrasound



Based on decades of research and development as well as the unique experience of its founders in ultrasound imaging (Bruno Richard, Doctor of Medicine and Physics, inventor of the convex probe, and Bruno Robert, Doctor of Physics), Sonoscanner offers ultrasound system renowned for their exceptional quality, in terms of image quality, functionalities (Doppler, AI Ready, automated reports, Cloud operation...) and compactness. In addition to a range of high-performance ultrasound system adapted to the needs of each doctor, Sonoscanner provides a wide range of services, a real support, a customer service department made up of committed and reactive experts, and a customized training program.

Sonoscanner ultrasound system are sold in France and in more than 45 countries. Currently, more than 3,600 doctors perform ultrasound system daily with Sonoscanner. Sonoscanner ultrasound system have been chosen for prestigious references (European Space Agency and Centre National des Études Spatiales, French Armed Forces for operational deployments). They are used by emergency services and SMUR as well as by specialists and many general practitioners who want to expand their field of investigation.

## SONOSCANNER, ONE OF THE GLOBAL LEADERS OF ULTRASOUND SYSTEM

Thanks to its major technological innovations, to the performance of its ultrasounds and quality of its services.



**SONOSCANNER**  
Premium Diagnostic Ultrasound

6 rue André Voguet  
75013 Paris - France  
+33 9 54 97 15 57  
[contact@sonoscanner.com](mailto:contact@sonoscanner.com)

Germany  
Walter-Kolb-Straße 9-11  
D-60594 Francfort-sur-le-Main

USA  
16192 Coastal Hwy  
Lewes, DE, 19958