

# EEG CAPS



GVB-SPES

GVB

**Worldwide**



## MultiCaps

2 - 20

MultiCap Flat	3 - 4
MultiCap Base	5 - 6
MultiCap Soft	7 - 8
MultiCap Cup	9 - 10
MultiCap Infa	11
MultiCap Accessories	14 - 20

## EEG Systemcaps

21 - 34

MEDCAP	22
SLEEP CAP	25
SOFTCAP	26
CUPCAP	27
Cup Electrodes	28 - 29
System Cap Accessories	30 - 34

## Pastes & Gels

35 - 36



## MultiCap-Collection

### Flexible

because, as well as being easy to position, you can quickly react to artefacts during use by simply relocating the electrode holders/positions

### Convenient

because you have the choice of 11 sizes between 24 and 66 cm.

### Cost-effective

because you can test several patients with various cap sizes using just one set of electrodes.

### Versatile

because you can use MultiCap in long-term sleep-recording, in the routine, as well as with restless patients and in research.

### Comprehensive

because a wide range of accessories is also available.

### Quick

because the cap material allows immediate use for the next measurement after a short but thorough cleaning.



NEW NEW NEW NEW NEW NEW NEW NEW NEW NEW NEW NEW NEW NEW NEW

**Now also available with position markings directly on the cap**

NEW NEW NEW NEW NEW NEW NEW NEW NEW NEW NEW NEW NEW NEW NEW

## Size table

Size	Circumference	Color-code	
I3	24-28cm	brown	Premature babies
I2	28-32cm	pink	Premature babies
I1	32-36cm	light blue	Babies
XS	36-42cm	green	Toddlers
S	42-48cm	yellow	Children
MS	45-51cm	orange	Teenager
M	48-54cm	red	Teenager
LM	51-57cm	violet	Adult
L	54-60cm	blue	Adult
XLL	57-63cm	black	Adult
XL	60-66cm	white	Adult

## MultiCap "Flat"

No additional electrode holders necessary

Available with various connectors for compatibility with all EEG machine models

Stable signal thanks to sintered AgCl electrodes

The seams are color coded for easy recognition of each cap size

Easy assignment thanks to labelled electrode positions

### Discover the benefits

#### Improved handling

This type of cap can be used without the need for additional electrode holders. Thanks to innovative technology, the electrodes are attached directly to the cap. Simple fitting makes it possible to adapt the cap quickly and individually to your needs.



#### More comfort

Also worth noting is the flat shape of the electrode, which your patient will barely notice when attached to the head and is therefore pleasant to wear.



### Electrodes and impedances

1. Place the disc electrodes in the desired position, then stretch the material of the cap a little so that it encompasses the electrode in a way that ensures it is firmly attached.



2. The area on the scalp where the electrode will be positioned should be prepared in order to minimise impedance. We recommend the abrasive gels 'EVERY' or 'NUPREP' which both feature very good preparation properties. The user-friendly style of the cap means that all electrode positions are easily accessible.



3. Make sure that the electrode cables do not get entangled or bent. Use the supplied Velcro fastener to bundle the cables together (see photo).



4. A conductive gel (such as 'NEURGEL' or 'Synapse' for long-term monitoring) should be used to increase the contact surface between the electrode and the skin. You can fill the designated hole in the electrode (notch) using the supplied syringe and blunt needle.



## MultiCap "Flat"



### MultiCap "Flat" System cap (without electrodes)

Circumference	Comments	Item number	PU
I3 24-28cm	brown Premature babies	MEI-3KK-00KK00-K	1 pc.
I2 28-32cm	pink Babies	MEI-2KK-00KK00-K	1 pc.
I1 32-36cm	lightblue Babies	MEI-1KK-00KK00-K	1 pc.
XS 36-42cm	green Toddlers	ME-XSKK-00KK00-K	1 pc.
S 42-48cm	yellow Children	ME-SKK-00KK00-K	1 pc.
MS 45-51cm	red/yellow Teenager	ME-MSKK-00KK00-K	1 pc.
M 48-54cm	red Teenager	ME-MKK-00KK00-K	1 pc.
LM 51-57cm	blue/red Adult	ME-LMKK-00KK00-K	1 pc.
L 54-60cm	blue Adult	ME-LKK-00KK00-K	1 pc.
XLL 57-63cm	white/blue Adult	ME-XLLK-00KK00-K	1 pc.
XL 60-66cm	white Adult	ME-XLKK-00KK00-K	1 pc.

### Accessories

Item details	Comments	Item number	PU
Electrode	single, 1,5mm DIN plug	MF-17-A-26-S15	5 pcs.
Electrode harness	with 14 sintered AgCl electrodes	MF-17-A-14250-S12	1 pc.
Electrode harness	with 20 sintered AgCl electrodes	MF-17-A-20250-S12	1 pc.
Electrode harness	with 21 sintered AgCl electrodes	MF-17-A-21250-S12	1 pc.
Chest belt large L	with clip	ME-3-L	1 pc.
Chest belt small S	with clip	ME-3-S	1 pc.
Chest belt extra small SI	with velcro fastener	ME-3-SI	1 pc.
Chin strap large L	with velcro fastener	ME-23-L	1 pc.
Chinstrap medium M	with velcro fastener	ME-23-M	1 pc.
Chin strap small S	with velcro fastener	ME-23-S	1 pc.
Ear electrodes	sintered AgCl	EAR1026S0-2	1 pair
Velcro fastener	for cable binding	ME-13-X	1 pc.
Foam rings	Diameter 13mm	MCE-6	100 pcs.
Cable sheat	running meters	ME-14	1m

**i** The entire MultiCap accessories on page 13 to 20  
X: Y = yellow, R = red, S = black, B = blue, G = green, W = white



MF-17-A-26



EAR1026S0-2



MCE-6

### Electrodes

The sintered AgCl electrodes of the MultiCap "Base" ensure that polarisation is minimised and that stable results are obtained even during prolonged conductance procedures. The small notches allow each electrode position to be very easily filled with gel.

Connection plug: 1.5 mm DIN plug or 25 pole plugboard  
(other configurations available on request)

### Additional electrodes

For this system cap there are also suitable ear electrodes available. These ear electrodes are made of the same material as the "flat" electrodes.

### Foam rings

Additionally, foam rings can be attached to the inner face of the MultiCap "flat" electrodes. These provide better comfort and minimise any possible electrode pressure. The rings are attached quickly and easily by an adhesive surface.

## MultiCap "Base"

- The electrode holders permit individual positioning
- Available with various connectors for compatibility with all EEG machine models
- Stable signal thanks to sintered AgCl electrodes
- The seams are color coded for easy recognition of each cap size
- Easy assignment thanks to labelled electrode positions

### Discover the benefits

#### Improved handling

For this cap you will require special electrode holders. The rings can be fitted individually. Depending on the size of the cap, a maximum of 74 can be installed and because the electrodes slide easily into the holders, you have the option of inserting them before or after placing the cap on the head of the patient.



#### The application



##### The preparation

As when working with conventional electrodes, the electrode positions are prepared with abrasive gel when using the MultiCaps.



##### The impedance

Thanks to the user-friendly fit of the cap, even when it is on, the electrode positions can be optimised or even reprocessed.



##### The electrode

The different MultiCap cap types (Flat, Base, Soft and Cup), permit the use of different, high-quality Base electrodes, SoftCap electrodes or conventional Cup electrodes.



##### The wiring

The electrodes are simply inserted into the mountings provided and fixed in place. Small tabs at the positions enable the electrodes to be quickly connected to the Head Box.



##### Optimally contact

All electrode types have a hole or notch for blunt needles with which the contact gel can be inserted under the electrodes. Clean leads are no longer a problem.



The detailed user video can be found at [www.gvb-gelimed.com/mediathek](http://www.gvb-gelimed.com/mediathek)



## MultiCap "Base"

The Base MultiCap is supplied as standard with 21 sintered AgCl electrode positions for adults, young people and children and with 15 electrodes (Fp1, Fp2, F3, F4, GND, T3, O1, O2, P3, P4, C3, C4, Fz, T4 und CPZ) for infant use. The electrode positions are arranged according to the international 10/20 system.

The great advantage of this cap type is that it is very user-friendly as illustrated by the fact that users can adjust, add or remove electrodes by themselves. The cap's special design also enables users to reach the patients scalp to improve impedance if required, when the cap is on place.

### MultiCap "Base" Systemcaps

with 21/ 15 electrode holders (without electrodes)

Item details	Comment	Item number	PU
I3 24-28cm	brown	Premature babies	MEI-3KK-14RK00-K 1 pc.
I2 28-32cm	pink	Babies	MEI-2KK-14RK00-K 1 pc.
I1 32-36cm	light blue	Babies	MEI-1KK-14RK00-K 1 pc.
XS 36-42cm	green	Toddlers up to 4 years	ME-XSKK-20RK00-K 1 pc.
S 42-48cm	yellow	Children	ME-SKK-20RK00-K 1 pc.
MS 45-51cm	red/yellow	Teenagers	ME-MSKK-20RK00-K 1 pc.
M 48-54cm	red	Teenagers	ME-MKK-20RK00-K 1 pc.
LM 51-57cm	blue/red	Adult	ME-LMKK-20RK00-K 1 pc.
L 54-60cm	blue	Adult	ME-LKK-20RK00-K 1 pc.
XLL 57-63cm	white/blue	Adult	ME-XLLKK-20RK00-K 1 pc.
XL 60-66cm	white	Adult	ME-XLKK-20RK00-K 1 pc.

### Accessories

Item details	Comment	Item number	PU
Spare electrodes	sintered AgCl	ME-17-A-26	5 pcs.
Spare electrodes	sintered AgCl	ME-17-A-26-SET	Setwith23
Electrode harness	with 14 sintered AgCl electrodes	ME-17-A-14250-S12	1 pc.
Electrode harness	with 20 sintered AgCl electrodes	ME-17-A-20250-S12	1 pc.
Electrode harness	with 21 sintered AgCl electrodes	ME-17-A-21250-S12	1 pc.
Chest belt Size L	with clip	ME-3-L	1 pc.
Chest belt Size S	with clip	ME-3-S	1 pc.
Chest belt Size SI	with velcro fastener	ME-3-SI	1 pc.
Chin strap Size L	with velcro fastener	ME-23-L	1 pc.
Chin strap Size M	with velcro fastener	ME-23-M	1 pc.
Chin strap Size S	with velcro fastener	ME-23-S	1 pc.
Velcro fastener	for cable binding	ME-13-X	1 pc.
Electrode holder	plastic, yellow	ME-20	SETwith10
Position marker	10/20 positions	ME-F-SET	SETwith22
Ear electrode holder	Set of 2 pcs.	OHR-EM-H	1 pair
Electrode + holder	Set of two	OHR-EM-26	1 pair
Cable sheat	running meters	ME-14	1 meter

*i* The entire MultiCap accessories on page13 to 20

X: Y = yellow, R = red, S = black, B = blue, G = green, W = white

### Electrodes

The sintered AgCl electrodes of the MultiCap-"Base" guarantees minimal polarisation and consistent results during long measurements. It's easy to fill the electrodes with gel using the small indentation.

Connection: 1,5mm DIN connector or 25 pole plugboard (other configurations also available on request)

### Electrode mountings

The "Base" MultiCap electrode mountings are made of rigid plastic with guaranteed long life. To replace or add electrodes simply pull them apart and insert wherever you want. Each mounting is provided with a practical positioning tab.

### Spare electrodes

This system cap also has corresponding ear mountings which fit the basic electrodes of the MultiCaps "Base" system. These can be fitted with the same electrodes as the cap.



ME-17...



ME-20



OHR-EM-26

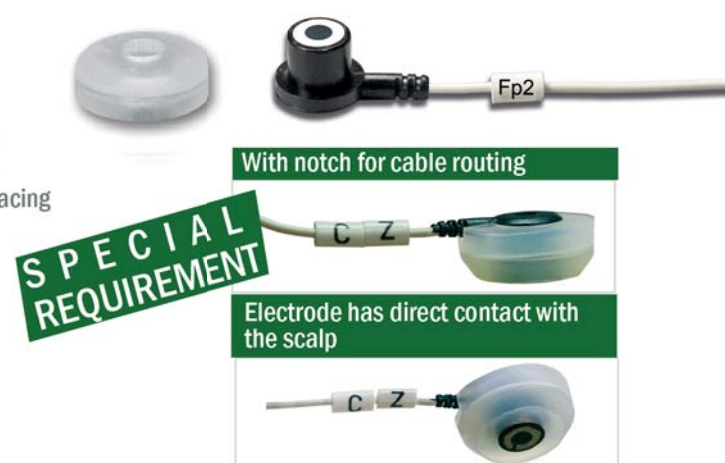
## MultiCap "Soft"

- The electrode holders permit individual positioning
- Available with various connectors for compatibility with all EEG machine models
- Stable signal thanks to sintered AgCl electrodes
- The seam are color coded for easy recognition of each cap size
- Easy assignment thanks to labelled electrodes

### Discover the benefits

#### Improved handling

For this cap you will require special electrode holders of silicone. The rings can be fitted individually. Depending on the size of the cap up to a maximum of 74 of them can be fitted. For this type of cap the electrodes are inserted before placing the cap on the patient's head.



#### The application

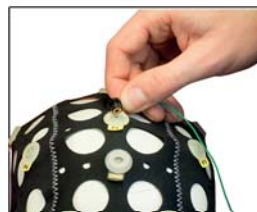
##### The preparation

As when working with conventional electrodes, the electrode positions are prepared with abrasive gel when using the MultiCaps.



##### The electrode

The different MultiCap cap types (Flat, Base, Soft and Cup), permit the use of different, high-quality Base electrodes, SoftCap electrodes or conventional Cup electrodes.



##### Optimally contact

All electrode types have a hole or notch for blunt needles with which the contact gel can be inserted under the electrodes. Clean leads are no longer a problem.



##### The impedance

Thanks to the user-friendly fit of the cap, even when it is on, the electrode positions can be optimised or even reprocessed.

##### The wiring

The electrodes are simply inserted into the mountings provided and fixed in place. Small tabs at the positions enable the electrodes to be quickly connected to the Head Box.



The detailed user video can be found at [www.gvb-gelimed.com/mediathek](http://www.gvb-gelimed.com/mediathek)

INFO BOX



## MultiCap "Soft"



We supply the MultiCap "Soft" as standard with 21 and/or 14 tin electrodes which are arranged according to the 10/20 system.



### MultiCap™ Softcap (21/15 electrode holder) without electrodes

Item details	Comments	Item number	PU
I3 24-28cm	brown Premature babies	MWI-3KK-14RK00-K	1 pc.
I2 28-32cm	pink Babies	MWI-2KK-14RK00-K	1 pc.
I1 32-36cm	light blue Babies	MWI-1KK-14RK00-K	1 pc.
XS 36-42cm	green Toddlers up to 4 years	MW-XSKK-20RK00-K	1 pc.
S 42-48cm	yellow Children	MW-SKK-20RK00-K	1 pc.
MS 45-51cm	red/yellow Teenagers	MW-MSKK-20RK00-K	1 pc.
M 48-54cm	red Teenagers	MW-MKK-20RK00-K	1 pc.
LM 51-57cm	blue/red Adult	MW-LMKK-20RK00-K	1 pc.
L 54-60cm	blue Adult	MW-LKK-20RK00-K	1 pc.
XLL 57-63cm	white/blue Adult	MW-XLLKK-20RK00-K	1 pc.
XL 60-66cm	white Adult	MW-XLKK-20RK00-K	1 pc.

### Accessories

Item details	Comments	Item number	PU
Electrode Kit "sintered AgCl"	with 21 electrodes	MW-17-A-21250-S10	1 pc.
Electrode Kit "tin"	with 21 electrodes	MW-17-Z-21250-S10	1 pc.
Electrode Kit "sintered AgCl"	with 20 electrodes	MW-17-A-20250-S10	1 pc.
Electrode Kit "tin"	with 20 electrodes	MW-17-Z-20250-S10	1 pc.
Electrode Kit "sintered AgCl"	with 14 electrodes	MW-17-A-14250--S10	1 pc.
Electrode Kit "tin"	with 14 electrodes	MW-17-Z-14250-S10	1 pc.
Electrode "sintered AgCl"	1mm connector	MW-17-A-17-S15	5 pc.
Electrode "Gold"	1mm connector	MW-17-G-17-S15	5 pc.
Electrode "tin"	1mm connector	MW-17-Z-17-S15	5 pc.
Electrode "gold"	1,5mm DIN connector	MW-17-G-26-S15	5 pc.
Electrode "sintered AgCl"	1,5mm DIN connector	MW-17-A-26-S15	5 pc.
Electrode "tin"	1,5mm DIN connector	MW-17-Z-26-S15	5 pc.
Chest belt size L	with clip	ME-3-L	1 pc.
Chest belt size S	with clip	ME-3-S	1 pc.
Chest belt size SI	with velcro fastener	ME-3-SI	1 pc.
Chin strap size L	with velcro fastener	ME-23-L	1 pc.
Chin strap size M	with velcro fastener	ME-23-M	1 pc.
Chin strap size S	with velcro fastener	ME-23-S	1 pc.
Velcro fastener	for cable binding	ME-13	1 pc.
Electrode mounting	silicon	MWEF-20	SET of 10
Electrode mounting	silicon with notch	MWEF-22	SET of 10
Position marker	10/20 positions	ME-F-SET	SET of 22

*i The entire MultiCap accessories on page 13 - 20*



Sample connector



MWEF-20



### Electrodes

"Soft" MultiCap electrodes are available in the following materials - tin, gold or sintered AgCl. Electrodes can be supplied individually (with connectors as required) or bundled with a combined connector. Combined electrodes are supplied for specific devices. Additional electrodes of this type are supplied with a contact-protected 1.5 mm DIN plug. They can also be supplied with any other plug on request.

### Electrode mountings

"Soft" MultiCap electrode mountings are made of silicone which offers the wearer great comfort. The silicone rings can be inserted or removed from the flexible fabric of the cap. Each mounting is provided with a practical positioning tab.

### Additional electrodes

We recommend our ear electrodes as additional electrodes. These are made of sintered AgCl, tin or gold can be found at page 33. (important - all electrodes within a single cable system must be made of the same material).

## MultiCap "Cup"

- The electrode holders permit individual positioning
- Available with various connectors for compatibility with all EEG machine models
- Stable signal thanks to Ag/AgCl or gold electrodes
- The seams are color coded for easy recognition of each cap size
- Easy assignment thanks to labelled electrodes

### Discover the benefits

#### Improved handling

For this cap you will require special CUP electrode holders. The clips can be fitted individually. Depending on the size of the cap up to a maximum of 74 of them can be fitted. Because the CUP electrodes slide easily into the holders, you have the option of sliding the electrodes into the holders before placing the cap on the patient, or you can put the cap on the patient first.



#### The application

##### The preparation

As when working with conventional electrodes, the electrode positions are prepared with abrasive gel when using the MultiCaps.



##### The electrode

The different MultiCap cap types (Flat, Base, Soft and Cup), permit the use of different, high-quality Base electrodes, SoftCap electrodes or conventional Cup electrodes.



##### Optimally contact

All electrode types have a hole or notch for blunt needles with which the contact gel can be inserted under the electrodes. Clean leads are no longer a problem.



##### The impedance

Thanks to the user-friendly fit of the cap, even when it is on, the electrode positions can be optimised or even reprocessed.

##### The wiring

The electrodes are simply inserted into the mountings provided and fixed in place. Small tabs at the positions enable the electrodes to be quickly connected to the Head Box.



The detailed user video can be found at [www.gvb-gelimed.de/mediathek](http://www.gvb-gelimed.de/mediathek)

INFO BOX *i*

## MultiCap "Cup"

The Cup MultiCap has one key feature. It allows the user to use standard 10 mm diameter Cup electrodes which makes this cap particularly flexible. The specially developed cup electrode mountings of the Cup MultiCap not only have the advantage that electrodes used for other monitoring systems can also be used with this cap, it also has all the benefits of the Base MultiCap and the Soft MultiCap. Particularly for new born or premature babies, this cap is a valuable aid as it eliminates the need to attach electrodes by adhesive.

### MultiCap-Softcap (21/15 electrode holder) without electrodes

Item details	Comments	Item number	PU
I3 24-28cm	brown Premature babies	MCI-3KK-14RK00-K	1 pc.
I2 28-32cm	pink Babies	MCI-2KK-14RK00-K	1 pc.
I1 32-36cm	light blue Babies	MCI-1KK-14RK00-K	1 pc.
XS 36-42cm	green Toddlers up to 4 years	MC-XSKK-20RK00-K	1 pc.
S 42-48cm	yellow Children	MC-SKK-20RK00-K	1 pc.
MS 45-51cm	red/yellow Teenagers	MC-MSKK-20RK00-K	1 pc.
M 48-54cm	red Teenagers	MC-MKK-20RK00-K	1 pc.
LM 51-57cm	blue/red Adult	MC-LMKK-20RK00-K	1 pc.
L 54-60cm	blue Adult	MC-LKK-20RK00-K	1 pc.
XLL 57-63cm	whit/blue Adult	MC-XLLK-20RK00-K	1 pc.
XL 60-66cm	white Adult	MC-XLKK-20RK00-K	1 pc.

### Accessories

Item details	Comments	Item number	PU
Chest belt size L	with clip	ME-3-L	1 pc.
Chest belt size S	with clip	ME-3-S	1 pc.
Chest belt size SI	with velcro fastener	ME-3-SI	1 pc.
Chin strap size L	with velcro fastener	ME-23-L	1 pc.
Chin strap size S	with velcro fastener	ME-23-M	1 pc.
Chin strap size M	with velcro fastener	ME-23-S	1 pc.
Velcro fastener	for cable binding	ME-13-X	1 pc.
Electrode mounting	plastic white	MCE-20	SET of 10
Position marker	10/20 Position	ME-F-SET	SET of 22
Cable sheath	running meter	ME-14	1 meter

*i* The entire MultiCap accessories on page 13 - 20

X: Y = yellow, R = red, S = black, B = blue, G = green, W = white



MCE-20



### Electrodes

You can use all stamped 10mm diameter gold or chlorinated or Ag/AgCl Cup electrodes from UNIMED. This means you could save complete electrode sets because you can use cup electrodes in different applications. Cup electrodes are supplied as standard with a 1.5 mm DIN plug, but can be supplied with a different plug on request.

### Electrode mountings

The MultiCap Cup plastic mountings are threaded for easy replacement. The cup electrodes are simply pushed into the plastic guide in the mounting. Each mounting is provided with a practical positioning tab.

### Additional electrodes

We recommend our ear electrodes as additional electrodes. These are made of Ag/AgCl or gold and can be found at page 33. (Important - all electrodes within a single cable system must be made of the same material).

## MultiCap “Infa”

### A ideal preparation for our smallest patients

After that you can fill the electrode contact paste (AC Cream, TEN20, Elefix) by using a narrow spatula

### Easy application

The ‘Infa’ version of our MultiCap allows you to perform important steps in advance, which is useful when testing young and generally restless patients. You can prepare the Flat electrodes with conductive neurodiagnostic paste (AC Cream, TEN20, Elefix) before placing the cap on the patient and then conveniently fit it afterwards.



### The preparation

Turn the MultiCap inside out. You can then easily fill the electrodes with the conductive paste (AC Cream, TEN20, Elefix) using a spatula. Once this has been done, turn the MultiCap back the right way and place it on the patient.



### The impedances

If some impedance values still need to be corrected after the MultiCap has been fitted, this can easily be done using an abrasive gel thanks to the openings in the cap. We recommend NEUR PREP, Skin Pure or Nuprep.



### MultiCap without electrodes

Item details	Comments	Item number	PU
24-28cm	brown Premature babies	MEI-3KK-00KK00-K	1 pc.
28-32cm	pink Neonatal	MEI-2KK-00KK00-K	1 pc.
32-36cm	light blue Babies	MEI-1KK-00KK00-K	1 pc.
36-42cm	green Toddlers up to 4 years	ME-XSKK-00KK00-K	1 pc.
Electrode	single, 1,5mm DIN plug	MF-17-A-26-S15	5 pcs.
Electrode harness	with 14 sintered AgCl electrodes	MF-17-A-14250-S12	1 pc.
Electrode harness	with 20 sintered AgCl electrodes	MF-17-A-20250-S12	1 pc.
Electrode harness	with 21 sintered AgCl electrodes	MF-17-A-21250-S12	1 pc.
Chest belt extra small	with velcro fastener	ME-3-SI	1 pc.
Chin strap small	with velcro fastener	ME-23-S	1 pc.

**MultiCap FLAT  
with 128 electrodes**



**MultiCap FLAT  
with 74 electrodes**



# EEG-SYSTEM CAPS/ SUB D plug

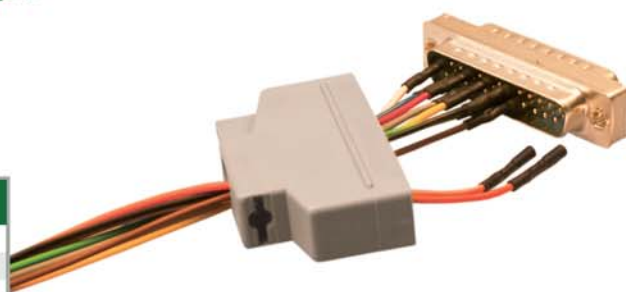
## Stay flexible with our new 25-pin Sub-D plug

In order to make the electrodes trunks service-friendly, we have developed a connector that allows the user to replace or change individual electrodes, despite multiple connector.

This is made possible due to the fact that we do not solder the cable individually, but rather make it pluggable in the sub D connector. The individual cables are no longer woven into a braid, but are bundled in a self-closing protective jacket.



- Easy to exchange the electrodes - no soldering necessary
- For all electrode and cap variants
- Free choice of the assignment of the connector
- You obtain the maximum benefit from your investment



### MultiCap FLAT

Item details	Comments	Item number	PU
Harness	with 14 sintered AgCl electrodes	MF-17-A-14250-S12	1 pc.
Harness	with 20 sintered AgCl electrodes	MF-17-A-20250-S12	1 pc.
Harness	with 21 sintered AgCl electrodes	MF-17-A-21250-S12	1 pc.
Spare electrodes	sintered AgCl	MF-17-A-17-S15	1 pc.
Cable sheat	running meters	ME-14	1 meter

### MultiCap BASE

Item details	Comment	Item number	PU
Harness	with 14 sintered AgCl electrodes	ME-17-A-14250-S12	1pc.
Harness	with 20 sintered AgCl electrodes	ME-17-A-20250-S12	1 pc.
Harness	with 21 sintered AgCl electrodes	ME-17-A-21250-S12	1 pc.
Spare electrode	sintered AgCl	ME-17-A-17-S15	1 pc.
Cable sheat	running meters	ME-14	1 meter

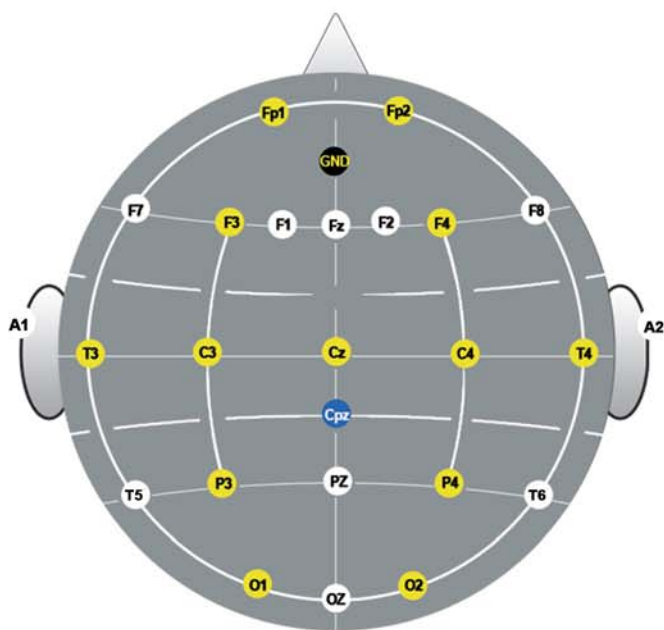
### MultiCap SOFT

Item details	Comments	Item number	PU
Harness	with 21 sintered AgCl electrodes	MW-17-A-21250-S12	1 pc.
Harness	with 21 sintered tin electrodes	MW-17-Z-21250-S12	1 pc.
Harness	with 20 sintered AgCl electrodes	MW-17-A-20250-S12	1 pc.
Harness	with 20 sintered tin electrodes	MW-17-Z-20250-S12	1 pc.
Harness	with 14 sintered AgCl electrodes	MW-17-A-14250-S12	1 pc.
Harness	with 14 sintered tin electrodes	MW-17-Z-14250-S12	1 pc.
Spare electrode	sintered AgCl	MW-17-A-17-S15	1 pc.
Spare electrode	tin	MW-17-Z-17-S15	1 pc.
Cable sheat	running meters	ME-14	1 meter

## MultiCap - electrode positions

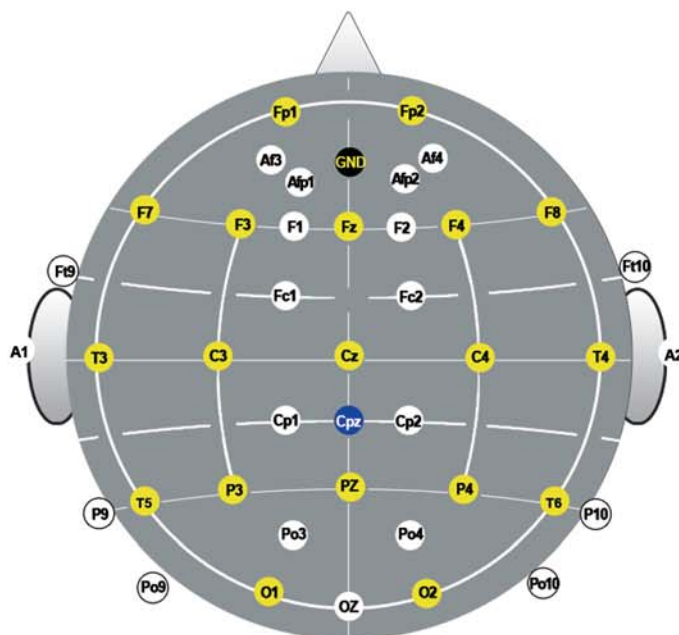
MultiCaps are supplied as standard with the following layout. All MultiCaps can be adapted and expanded easily and quickly to your needs.

### SCHEME 11FA



### SCHEME 21

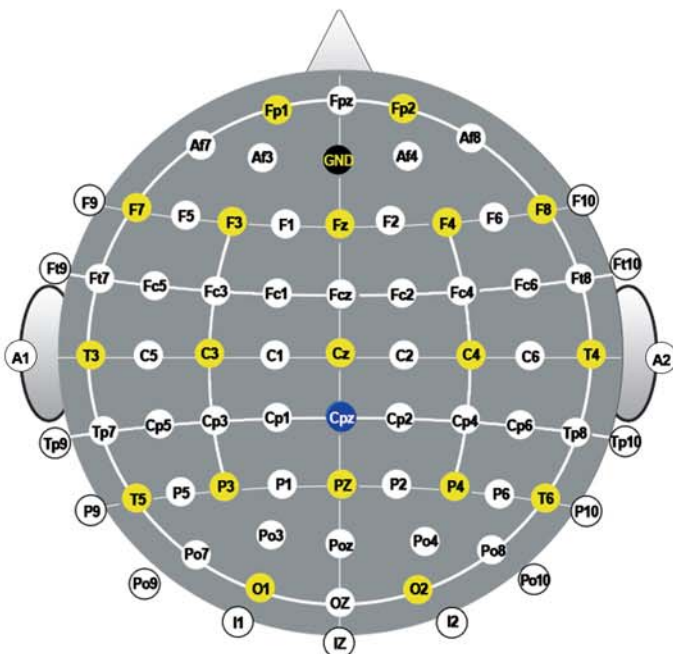
CAP SIZE: XL, XLL, L, LM, M, MS, S, XS



\*with MultiCap XS are maximum 23 electrode positions possible

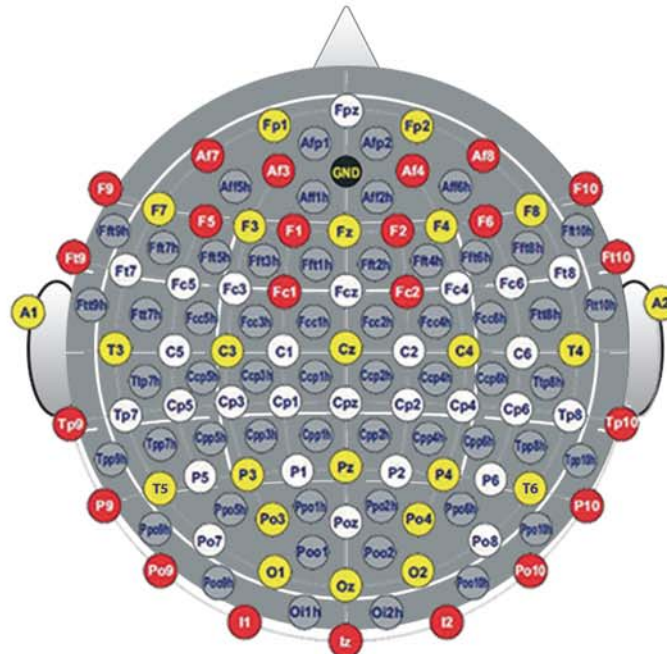
### SCHEME 74

CAP SIZE: XL, XLL, L, LM, M, MS, S



### SCHEME 128

CAP SIZE: XL, XLL, L, LM, M



## CLEANING AND HANDLING MultiCaps AND ELECTRODES



### ATTENTION!

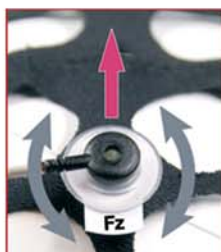
Electrodes and caps should be cleaned immediately after use to remove gel residues before they dry on.



Release the electrode from the mounting by twisting backwards and forwards on the electrode unit.



Release the electrode from the mounting by carefully pulling it out of the mounting. Take care to grip the cable peg and do not pull the cable itself.



Carefully release the electrode by twisting backwards and forwards to pull it out of the electrode mounting. Take care to grip the electrode units and not the cable.



Hold the electrode by the reinforced part of the lead just before the electrode body and remove it after gently stretching the cap material.

Cleaning the caps and electrodes with a mild cleaning agent such as "IVORY" is quite sufficient. Do not use caustic cleaning agents or concentrated alcohol-based substances.

After this, rinse the caps and electrodes in clear lukewarm water. Finally, dry the materials with a hand towel.

NEVER touch metal with the electrode core.

The electrodes and caps should be stored in a dark, dry place.

### ATTENTION!

Incorrect handling can cause damage. Do not use any scouring agents or strongly disinfectant solutions which are based, for instance, on acetone, to clean the products.

For disinfecting, we recommend the disinfectant solutions "Gigasept FF NEW" in which the cap is immersed for 15 minutes. Afterwards clean and rinse everything as described above. Before you start disinfecting, wash the cap as described above to remove gel residues.

### ATTENTION!

Do not place the electrodes in a chloride or saline solution, as this can cause corrosion. If hot disinfecting methods (steam) are used, the cable sheathing may be damaged.





## FLAT electrode harness

Electrode harness with plugboard.			
Item details	Comment	Item number	PU
Electrode length 120cm	21x sintered electrodes to 25-conn. plug	<b>MF-17-A-21250-S12</b>	1 pc.
Electrode length 120cm	20x sintered electrodes to 25-conn. plug	<b>MF-17-A-20250-S12</b>	1 pc.
Electrode length 120cm	14x sintered electrodes to 25-conn. plug	<b>MF-17-A-14250-S12</b>	1 pc.

## BASE electrode harness

Electrode harness with plugboard.			
Item details	Comments	Item number	PU
Electrode length 120cm	21x sintered electrodes to 25-conn. plug	<b>ME-17-A-21250-S12</b>	1 pc.
Electrode length 120cm	20x sintered electrodes to 25-conn. plug	<b>ME-17-A-20250-S12</b>	1 pc.
Electrode length 120cm	14x sintered electrodes to 25-conn. plug	<b>ME-17-A-14250-S12</b>	1 pc.



## Soft electrode harness

Electrode harness with plugboard.			
Item Details	Comments	Item number	PU
Twisted electrode length 150cm	21x tin electrodes to 25-conn. plug	<b>MW-17-Z-21250-S15</b>	1pc.
Twisted electrode length 150cm	20x tin electrodes to 25-conn. plug	<b>MW-17-Z-20250-S15</b>	1pc.
Twisted electrode length 150cm	14x tin electrodes to 25-conn. plug	<b>MW-17-Z-14250-S15</b>	1pc.
Twisted electrode length 150cm	21x gold electrodes to 25-conn. plug	<b>MW-17-G-21250-S15</b>	1pc.
Twisted electrode length 150cm	20x gold electrodes to 25-conn. plug	<b>MW-17-G-20250-S15</b>	1pc.
Twisted electrode length 150cm	14x gold electrodes to 25-conn. plug	<b>MW-17-G-14250-S15</b>	1pc.
Twisted electrode length 150cm	21x sintered electrodes to 25-conn. plug	<b>MW-17-A-21250-S15</b>	1pc.
Twisted electrode length 150cm	20x sintered electrodes to 25-conn. plug	<b>MW-17-A-20250-S15</b>	1pc.
Twisted electrode length 150cm	14x sintered electrodes to 25-conn. plug	<b>MW-17-A-14250-S15</b>	1pc.

Electrode harness are also available in 100cm length and available with changeable plug



## CUP electrode harness

Electrode harness with plugboard.			
Item details	Comments	Item number	PU
Electrode length 150cm	21x gold-electrodes to 25-conn. plug	<b>MC-17-G-21250-S15</b>	1 pc.
Electrode length 150cm	20x gold-electrodes to 25-conn. plug	<b>MC-17-G-20250-S15</b>	1 pc.
Electrode length 150cm	14x gold-electrodes to 25-conn. plug	<b>MC-17-G-14250-S15</b>	1 pc.

Electrode harness are also available in 100cm length and available with changeable plug



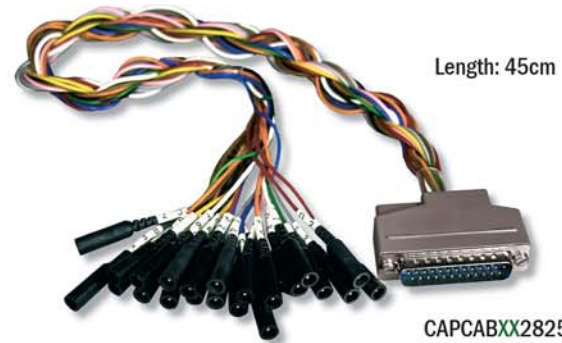
## ELECTRODE BOARD ADAPTER

### Adapter 1.5mm socket

Adapter for connecting MultiCaps with 20 - 25 x 1.5mm DIN socket on the electrode side and 25-channel plugboard on apparatus side

Item details	Comments	Item number	PU
Adapter	20 - 25 x 1,5mm DIN <b>socket</b> to 25 conn. plug	<b>CAPCABXX2825M</b>	1 pc.
Adapter	20 - 25 x 1,5mm DIN <b>plug</b> to 25 conn. plug	<b>CAPCABXX2825F</b>	1 pc.

Please replace **XX** in the item number with your desired number of pins



All adapters can be configured individually at any time to customer requirements. GVB geliMED offers adapters for all EEG apparatus currently on the market.

**INFO BOX**  
*i*



### Adapter for "Schwarzer" apparatus

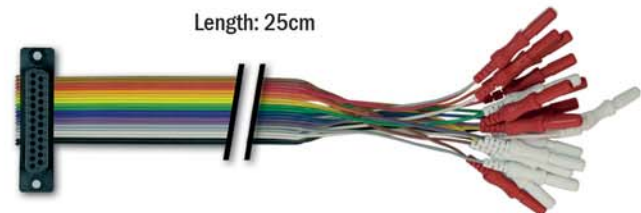
Special electrode board adapter for connecting electrodes individually to Schwarzer EEG apparatus which has a 37 or 50-channel plugboard. Other adapters for current EEG apparatus on request.

Item details	Comments	Item number	PU
Adapter (Illustration)	EPAS 24	<b>CAPCAB2537SW</b>	1 pc.
Adapter	EPAS 29	<b>CAPCAB2537SWER</b>	1 pc.
Adapter	National	<b>CAPCABR2550SW</b>	1 pc.
Adapter	International	<b>CAPCABR2550SWUS</b>	1 pc.

### Adapter 1.5mm plug

Electrode board adapter with 20 or 21 connections (20+ reference) with 1.5mm DIN plugs or 2 mm plugs to connect MultiCaps to EEG apparatus.

Item details	Comments	Item number	PU
Adapter 20 conn.	1.5 mm DIN plug	<b>CAPCAB2025F26</b>	1 pc.
Adapter 20 conn.	2 mm plug	<b>CAPCAB2025F21</b>	1 pc.
Adapter 21 conn.	1.5 mm DIN plug	<b>CAPCAB2125F26</b>	1 pc.
Adapter 21 conn.	2 mm plug	<b>CAPCAB2125F21</b>	1 pc.



# EEG-SYSTEM CAPS/ Adapter



## Adapter for "Nihon Kohden" apparatus

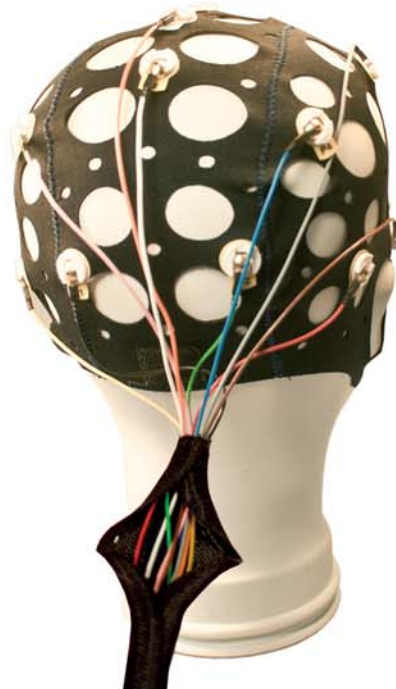
Special electrode board adapters for connecting electrodes to Nihon Kohden EEG apparatus, which has a multi-contact plugboard.

Item details	Comments	Item number	PU
Adapter Series 4	National	E-2-NK-2550-4G	1 pc.
Adapter Series 9	National	E-2-NK-2550-9G	1 pc.
Adapter Series 4	International	E-2-NK-2550-4K	1 pc.
Adapter Series 9	International	E-2-NK-2550-9K	1 pc.

## Cable sheath

- This woven fabric sheath is available in a variety of capacities (depending on the number of cables); it prevents cables becoming tangled and protects them.
- A unique fabric, which automatically closes up, is highly elastic and washable
- Cables can be removed from the sheath individually at any time
- Depending on the length of your cables you can order a woven fabric sheath in any length.

Item details	Comments	Item number	PU
Cable sheath	running meter	ME-14	1 pc.



## Connector

GVB-SPES offers a wide range of connectors, touch proof safety connector and others. We provide a great flexibility in order to respond to our customers necessities

1,5mm DIN plug



Sub-D-50



Sub-D-25



SUB-D-37



MDR-female



MDR-male



## MULTICAP-ACCESSORIES

### Chest belt

Chest belt for ideal fixing for each MultiCap model.

Item details	Comments	Item number	PU
Chest belt size L	Belt buckle	ME-3-L	1 pc.
Chest belt size S	Belt buckle	ME-3-S	1 pc.
Chest belt size SI	with velcro fastener	ME-3-SI	1 pc.



### Clamp electrodes

Clamp electrode with conducting surface, made of tin or AgCl for adults and children.

Item details	Comments	Item number	PU
Clamp electrode tin	Adults (red and black)	CLTA000MG	1 pair
Clamp electrode tin	Children (red and black)	CLTI000MG	1 pair
Clamp electrode AgCl	1-piece, met. Adult	CLAG0000	SET of 4
Clamp electrode AgCl	3-piece, met. Adult	CLAG0000M	SET of 4
Clamp electrode AgCl	3-piece, met. Child	CLAGP000M	SET of 4
Clamp electrode AgCl	3-piece, non-met. Adult	CLAG00BM	SET of 4

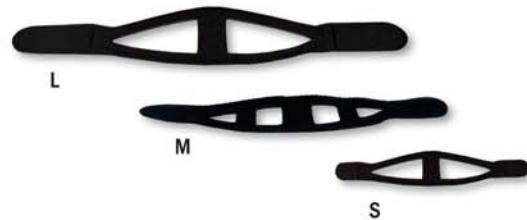
During an examination, avoid using different materials for additional electrodes such as EMG, EKG and ear electrodes together, as this can lead to problems in conductance due to potential shifts.



### Chin strap

This chin strap takes care for a perfect fit at all MultiCaps.

Item details	Comments	Item number	PU
Chin strap size L	with velcro fastener	ME-23-L	1 pc.
Chin strap size M	with velcro fastener	ME-23-M	1 pc.
Chin strap size S	with velcro fastener	ME-23-S	1 pc.



### Cable tie (velcro)

Velcro strap (cable tie) for easy fixing of electrode cables. Available in 6 colors.

Item details	Comment	Item number	PU
Cable tie (velcro)	black	ME-13-S	1 pc.
Cable tie (velcro)	yellow	ME-13-Y	1 pc.
Cable tie (velcro)	white	ME-13-W	1 pc.
Cable tie (velcro)	red	ME-13-R	1 pc.
Cable tie (velcro)	green	ME-13-G	1 pc.
Cable tie (velcro)	blue	ME-13-B	1 pc.

### Electrode cleaning

Wooden sticks with pointed and flat side, cotton buds or cleaning brushes for careful cleaning of electrodes. Thorough cleaning prevents artefacts.

Item details	Comments	Item number	PU
Wooden sticks	flat and pointed side	E-26	100 pcs.
Cleaning brushes	Synthetic fibres	PUL0000025	25 pcs.
Cotton buds	extra long handle	SWAPS	100 pcs.



## Disposable gel syringe and blunt needles

For injecting electrolyte gel into the head caps and cup electrodes.

Item details	Comments	Item number	PU
Syringe with 2 blunt needles	needle length 8mm	<b>E-7</b>	1 set
Gel syringes	Luer Lock	<b>E-7B</b>	125 pcs.
Blunt needles steel	needle length 25mm	<b>DISP0002500</b>	100 pcs.
Blunt needles steel	needle length 18mm	<b>DISP0001800</b>	100 pcs.
Blunt needles plastic	needle length 12mm	<b>E-8BK-GRÜN</b>	50 pc. + syringe
Blunt needles plastic	needle length 12mm	<b>E-8BK-BRAUN</b>	50 pc. + syringe
Syringe with 2 needles	needle length 12mm	<b>E-7BK-BRAUN</b>	1 set
Syringe with 2 needles	needle length 12mm	<b>E-7BK-GRÜN</b>	1 set



## IVORY washing emulsion for Systemcaps

Special cleaning emulsion which leaves no residues, unlike traditional cleaning agents.

Item details	Comments	Item number	PU
IVORY washing emulsion	700ml bottle	<b>E-16-F</b>	1 pc.

## NEUR Family

NEURPREP - Modern skin preparing gel  
 NEURGEL - flexible, highly conductive, saline and water-soluble gel  
 AC CREAM - Conductive contact cream

Item details	Comments	Item number	PU
NEURGEL SET	250g jar	<b>NEURGEL250V-3</b>	3 pcs.
NEURGEL	250g bottle	<b>NEURGEL250F</b>	1 pc.
AC CREAM	250g jar	<b>ACCREAM250V-3</b>	3 pcs.
NEURPREP	120g tube	<b>NPREP120T-3</b>	3 pcs.



## Cable label

This 52 label with different lettering are to mark the individual cables. You can use blanc labels for individual labeling.

Item details	Comments	Item number	PU
Cable label	52 pcs.	<b>ME-KP-SET</b>	1 pc.

## Head measure tape

Head measure tape to determine the head circumference for the selection of the exact cap size.

Item details	Comments	Item number	PU
Measure tape	Length: 205cm	<b>ME-12</b>	1 pc.



Special color coded measure tape for MultiCaps

## The range

EEG System Caps are made of elastane and fit perfectly in all sizes, available from very large adult (62 cm) to premature baby size (20 cm). The standard caps include the international 10/20 positioning system. EEG Caps are available in a wide range of designs.

Customer-specific EEG Caps (Customer Caps) can be manufactured with up to 256 electrode positions for research purposes or similar. Customer Caps are made to the customers specific requirements and fitted with electrodes made of tin, gold or sintered AgCl. These Caps are also available with flat electrodes, external cabling and external electrodes.

System caps can also be manufactured specially for applications with evoked potential. For this purpose the electrodes are specially worked into the positions which they require to evoke response. ElectroCaps for evoked potential are equipped as standard with 7 electrodes in positions C3, C4, Cz, O1, O2, OZ and GND. (Individual plug with 1.5mm TP-connection).

All EEG caps can be supplied with the full 10/20, 10/10 or with individual electrode positioning.



### The EEG cap system...

preferred by users,  
doctors and patients  
for good reason.

## The system

The EEG cap electrode fitting system is a high-performance tool. Whether you are working with 2 or 256 channels, ElectroCaps employ the quickest method available on the market to ensure that the electrodes are precisely positioned.

## The method

This EEG-method, which uses state-of-the-art technology, is based on a concept of sunken electrodes which ensure that every recording takes place reliably. Up to twenty cap sizes ensure that they are comfortable for every patient to wear, and at the same time ensure that the electrodes are always correctly positioned. Depending on the area of application, 2-3 cap sizes are generally required. The electrodes are securely fitted in the caps. This means that errors due to false positioning are practically excluded.

## Application

It only takes about five minutes to fit the caps with the international 10/20 positioning system. This reduces time and set-up costs. Expenditure on cleaning is minimal. EEG Caps are an invaluable help, even when treating patients who cannot co-operate.

## Standard MEDCAP

There is a single connection to your EEG equipment via an adapter. All electrodes are connected at the same time using a plug connection. Various designs of adapters are available, so that the caps can be connected to any type of EEG apparatus. The design of the electrodes ensures an excellent connection via a saline bridge. This guarantees artefact-free measurement, supported by the reduction of transfer resistance and sources of interference.



### MEDCAP with 20/21 electrodes

Item details	Comment	Item number	PU
<b>20 Electrodes</b>			
MEDCAP (blue)	Size 62-58 (L)	<b>CAMSOLAA20</b>	1 pc.
MEDCAP (red)	Size 58-54 (M)	<b>CAMSOMAA20</b>	1 pc.
MEDCAP (yellow)	Size 54-50 (S)	<b>CAMSOSAA20</b>	1 pc.
MEDCAP (green)	Size 50-46 (XS)	<b>CAMSOEAA20</b>	1 pc.
<b>21 Electrodes</b>			
MEDCAP (blue)	Size 62-58 (L)	<b>CAMSOLAA21</b>	1 pc.
MEDCAP (red)	Size 58-54 (M)	<b>CAMSOMAA21</b>	1 pc.
MEDCAP (yellow)	Size 54-50 (S)	<b>CAMSOSAA21</b>	1 pc.
MEDCAP (green)	Size 50-46 (XS)	<b>CAMSOEAA21</b>	1 pc.

THE LATEST MODERN TECHNOLOGY  
AND HIGH-QUALITY MATERIALS

GUARANTEE RELIABLE  
MEASUREMENT RESULTS

## Infa MEDCAP

MEDCAP with 14, 20 or 21 electrodes

Item details	Comment	Item number	PU
Infa Cap (Light blue)	Size 46-42 (1)	<b>CAMSOLIA21F</b>	1 pc.
Infa Cap (Light blue)	Size 46-42 (1)	<b>CAMSOLIA20F</b>	1 pc.
Infa Cap (Light blue)	Size 46-42 (1)	<b>CAMSOLIA14F</b>	1 pc.
Infa Cap (Pink)	Size 42-38 (2)	<b>CAMSOMIA14F</b>	1 pc.
Infa Cap (Brown)	Size 38-34 (3)	<b>CAMSOSIA14F</b>	1 pc.
Infa Cap (Yellow)	Size 34-30 (4)	<b>CAMSOLNA14F</b>	1 pc.

## MEDCAP intermediate size

MEDCAP with 14 or 20 electrodes

Item details	Comment	Item number	PU
Blue/Red	Size 60-56 (LM)	<b>CAMSOLMAA20</b>	1 pc.
Red/Yellow	Size 56-52 (MS)	<b>CAMSOMSAA20</b>	1 pc.
Yellow/Green	Size 52-48 (SXS)	<b>CAMSOSEAA20</b>	1 pc.
Light blue/Pink	Size 44-40 (1/2)	<b>CAMSOLMIA14F</b>	1 pc.
Pink/Brown	Size 40-36 (2/3)	<b>CAMSOMSIA14F</b>	1 pc.
Brown/Yellow	Size 36-32 (3/4)	<b>CAMSOSEIA14F</b>	1 pc.

### Spare electrodes and fixing items

Spare electrode discs with fixing items in flat and high design. Electrode discs made of tin, gold and sintered AgCl.

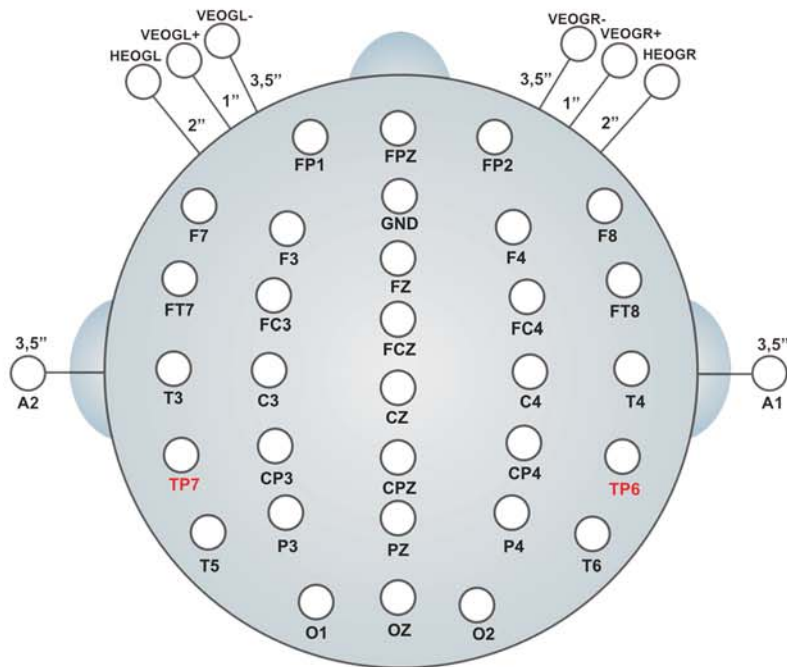


Item details	Comments	Item number	PU
Electrode (disc)	Tin	<b>RECELOOTIN</b>	10 pc.
Electrode (disc)	Gold	<b>RECEOGO</b>	10 pc.
Electrode (disc)	Sintered Ag/AgCl	<b>RECESIN</b>	10 pc.
Mounting	High design	<b>RECH000</b>	10 pc.
Mounting	Flat design	<b>RECF000</b>	10 pc.

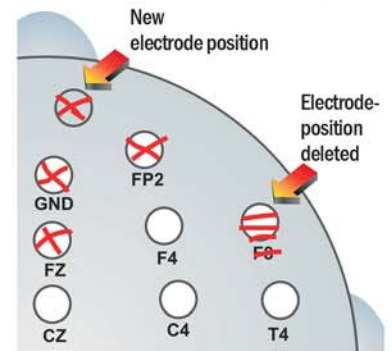
## CUSTOMER CAP

### Selection: Example of MEDCAP with 32+8 electrodes

- Step 1:** The diagram below shows the standard positions for the electrodes on this cap. Please mark the standard electrodes which you would like to have positioned with an X on this printout. If you would like to have individual electrodes positioned in places other than the preset positions, please mark an X on the corresponding position(s) and identify these new electrode positions (eg C4). Then clearly delete the standard position which should be omitted in their place. (See example illustrated).
- Step 2:** Choose the size of cap (field: "Cap size")
- Step 3:** Describe again in brief with key words the arrangement you would like us to supply.
- Step 4:** Please choose the plug configuration from the illustration below and specify the number of plugs.
- Step 5:** Complete the order details and fax this printout to us at the number below.



### Example



Cap size:

Description:

Name / Institution:

Contact:

Address:

Telephone:

### Plug configuration:

25-channel plug, number:

37-channel plug, number:

50-channel plug, number:

Fax: +49 (0) 45 51 - 95 67 33



### Cleaning MEDCAP

For reasons of hygiene, the MEDCAP must be regularly cleaned. If you do not wash gel residues off the cap, the material loses its elasticity and the serviceable life of the cap will be considerably shortened.

If there is insufficient time between individual sessions for the cap to dry, rub the cap dry with a terry towel.

Even if the cap feels slightly damp, it is suitable for immediate further use. MEDCAP can be dried quickly with cold air.

The metallic electrode discs must be thoroughly cleaned after each session. Otherwise an oxide layer will form on the electrode discs which will prevent good conductance results.

Dried gel residues on the electrodes act as insulators and therefore prevent good transfer resistance. This will ensure that the necessary transfer resistance values are maintained over the long term.

### Equipment connection

Using the pre-amplification adapter, you can connect the MEDCAP to all EEG apparatus.

Every cable or connecting pin on the pre-amplification adapter is colour-coded for easier identification. The combination of cable colour and connecting pin colour fixes the electrode position for each individual cable.

The individual cables for the pre-amplification adapter are separated widely enough to ensure that they will fit the pre-amplification equipment of all standard EEG apparatus. A particularly large pre-amplification device may require a larger gap between cables. In this case, separate the cables evenly and only as far as necessary in order to avoid tension on individual cables.

### MEDCAP and transmittable diseases

If you use the MEDCAP on a patient known or suspected of having an infectious disease, you should disinfect the cap afterwards with a cold sterilising solution.

### The following instructions apply to the disinfecting process:

People coming into contact with objects, which may possibly be contaminated with a transmittable pathogen, must take the appropriate protective measures indicated.

MEDCAP which are contaminated with blood or other bodily fluids, must be pre-cleaned with an enzyme cleaning agent. Then clean the cap with our liquid cleaning agent IVORY. Rinse the cap thoroughly and allow the cap to dry. Let the cap soak for at least 10 minutes in the activated sterilisation solution in accordance with the product instructions. We recommend Gigasept FF-NEW.

Dilute the solution according to the manufacturers instructions and leave to act for the specified time. Clean the cap before you place it in the solution. Do not leave the cap for longer than 20 minutes, unless essential for certain pathogens, as the material could suffer premature ageing. When placing in the solution, the plug must not get wet. After disinfecting, wash the cap again with Ivory and rinse thoroughly to remove residues of the disinfectant solution. The MEDCAP cannot be steam-sterilised.

Remove the contaminated liquids in accordance with regulations for infectious waste disposal.

## SLEEP CAP with external electrodes

SLEEP CAPS have been specially developed to improve wearing comfort for patients during night-time conductance. The electrodes are fitted between two neoprene discs and therefore cannot be felt by the patients, as they do not project.

SLEEP CAPS can be supplied in all cap sizes. A choice of tin, gold and Ag/AgCl electrodes are available. Cabling is external, so that any pressure on the head is avoided.

SLEEP CAPS are ideal for conductance in neonatal and premature baby applications. Unlike Soft Caps, the electrode positions cannot be altered on these caps and additional electrodes can only be fitted retrospectively by the manufacturer.



Detail illustration



### SLEEP CAP System Cap

Illustrated: standard selection with 20/21 tin electrodes in standard sizes

Item details	Comments	Item number	PU
<b>20 Electrodes</b>			
L 58 - 62cm	Adult	<b>CSSSOLAC20</b>	1 pc.
M 54 - 58cm	Young adult, women	<b>CSSSOMAC20</b>	1 pc.
S 50 - 54cm	Child	<b>CSSSOSAC20</b>	1 pc.
XS 46 - 50cm	Child	<b>CSSSOEAC20</b>	1 pc.
<b>21 / 11 Electrodes</b>			
L 58 - 62cm	Adult	<b>CSSSOLAC21</b>	1 pc.
M 54 - 58cm	Young adult, women	<b>CSSSOMAC21</b>	1 pc.
S 50 - 54cm	Child	<b>CSSSOSAC21</b>	1 pc.
XS 46 - 50cm	Child	<b>CSSSOEAC21</b>	1 pc.
1 42 - 46cm	Small child	<b>CSSSOLIC11</b>	1 pc.
2 38 - 42cm	Infants	<b>CSSSOMIC11</b>	1 pc.
3 34 - 38cm	Pre-bom baby	<b>CSSSOSIC11</b>	1 pc.

*i* Also available in other materials (gold / sintered Ag/AgCl) and other sizes. Other quantity of electrodes on request.

### IMPORTANT!

To protect the external cables a net is supplied, which is put on the head after the cap has been fixed in position. The caps are intended for single use

### INFO BOX



### DISPOCAP

Item details	Comments	Item number	PU
Size XL	Adults	<b>GE-XLKK-00KK00-K</b>	1 pc.
Size L	Young adults, women	<b>GE-LKK-00KK00-K</b>	1 pc.
Size M	Child	<b>GE-MKK-00KK00-K</b>	1 pc.
Size S	Child	<b>GE-SKK-00KK00-K</b>	1 pc.



## SOFTCAP with external electrodes

SOFTCAPs are available in seven sizes. The plug-in electrodes are inserted into latex-free silicone rings (electrode holders). Besides having removable electrodes. The electrodes are removable, so that the caps can be cleaned without electrodes



### SOFTCAP System Cap

Illustrated: standard selection with 20/21 tin electrodes in standard sizes

Item details	Comments	Item number	PU
<b>20 / 10 Electrodes</b>			
L 58 - 62cm	Adult	<b>CASSOLAC20</b>	1 pc.
M 54 - 58cm	Young adult, women	<b>CASSOMAC20</b>	1 pc.
S 50 - 54cm	Child	<b>CASSOSAC20</b>	1 pc.
XS 46 - 50cm	Child	<b>CASSOEAC20</b>	1 pc.
<b>21 / 11 Electrodes</b>			
L 58 - 62cm	Adult	<b>CASSOLAC21</b>	1 pc.
M 54 - 58cm	Young adult, women	<b>CASSOMAC21</b>	1 pc.
S 50 - 54cm	Child	<b>CASSOSAC21</b>	1 pc.
XS 46 - 50cm	Child	<b>CASSOEAC21</b>	1 pc.
1 42 - 46cm	Small child	<b>CASSOLIC11</b>	1 pc.
2 38 - 42cm	Infants	<b>CASSOMNC11</b>	1 pc.
3 34 - 38cm	Pre-born baby	<b>CASSOSNC11</b>	1 pc.

*i* Also available in other materials (gold / sintered Ag/AgCl) and other sizes. Other quantity of electrodes on request.



For twisted cable see page 16

### Spare electrodes and fixing items

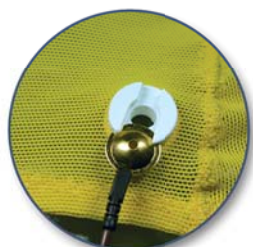
Spare electrode with fixing items. Electrode made of tin, gold and sintered AgCl. Cable length 150cm.

Item details	Comments	Item number	PU
Electrode	Tin	<b>RECES150TIN</b>	5 pc.
Electrode	Gold	<b>RECES150AU</b>	5 pc.
Electrode	Sintered AgCl	<b>RECES150AGCL</b>	5 pc.
Mounting	Soft design	<b>SOFTMAN000C</b>	10 pc.
Cable sheathing	running meters	<b>ME-14</b>	1 meter



## CUPCAP

This cap was developed to allow the use of gold cup electrodes (see below). The flat holders and flat shape of the electrodes make this cap ideal for long-term pick-up and recording newborns in incubators.



Close-up of electrode fastening



### CUPCAP System Cap

Item details	Comments	Item number	PU
<b>20 / 10 Electrodes</b>			
L 58 - 62cm	Adult	<b>CDFOOLAC20</b>	1 pc.
M 54 - 58cm	Young adult, women	<b>CDFOOMAC20</b>	1 pc.
S 50 - 54cm	Child	<b>CDFOOSAC20</b>	1 pc.
XS 46 - 50cm	Child	<b>CDFOOEC20</b>	1 pc.
<b>21 / 11 Electrodes</b>			
L 58 - 62cm	Adult	<b>CDFOOLAC21</b>	1 pc.
M 54 - 58cm	Young adult, women	<b>CDFOOMAC21</b>	1 pc.
S 50 - 54cm	Child	<b>CDFOOSAC21</b>	1 pc.
XS 46 - 50cm	Child	<b>CDFOOEC21</b>	1 pc.
1 42 - 46cm	Small child	<b>CDFOOLIC21</b>	1 pc.
2 38 - 42cm	Infants	<b>CDFOOMNC11</b>	1 pc.
3 34 - 38cm	Pre-born baby	<b>CDFOOSNC11</b>	1 pc.
<i>i Also available in other materials (gold / sintered Ag/AgCl) and other sizes. Other quantity of electrodes on request.</i>			



### Fixing items

Item details	Comments	Item number	PU
Mounting	plastic	<b>MCE-20</b>	10 pcs.

# EEG-ACCESSORIES/ Cup electrodes

**NEURO.CUP.**  
CUP ELECTRODES  
EEG EMG EP

## Silver (Ag) Electrodes

Pure silver electrodes are electrodes which can be polarised. They set slow EEG frequencies below 10 Hz against a resistance rising exponentially steeply with the decrease in frequency and therefore lead to a distortion of the EEG signal. Pure silver electrodes are therefore not suited to EEG conductance, but are the preferred choice for EP conductance, as slow frequencies (undesirable drift) are not recorded.

Item details	Comment	Item number	PU
Cup-electrodes	with 50cm cable	DESM052600	10 pcs.
Cup-electrodes	with 100cm cable	DESM102600	10 pcs.
Cup-electrodes	with 150cm cable	DESM152600	10 pcs.
Cup-electrodes	with 200cm cable	DESM202600	10 pcs.
Cup-electrodes	with 250cm cable	DESM252600	10 pcs.

 1,5mm DIN plug



diameter 10mm  
with anti-kink device



with kink protection

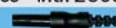


diameter 10mm

## Gold (Au) and Ag/AgCl electrodes, stamped

The base material of the gold and Ag/AgCl Cup electrodes consists of silver and is coated with either a gold or Ag/AgCl alloy. The thickness of the coating is 3 $\mu$ , although other electrodes in common use only have a coating of 2 $\mu$ . The thicker the coating, the better and longer the serviceable life of the electrode.

Item details	Comments	Item number	PU
Gold Cup-electrodes	with 50cm cable	DEGM052600	10 pc.
Gold Cup-electrodes	with 100cm cable	DEGM102600	10 pc.
Gold Cup-electrodes	with 150cm cable	DEGM152600	10 pc.
Gold Cup-electrodes	with 200cm cable	DEGM202600	10 pc.
Gold Cup-electrodes	with 250cm cable	DEGM252600	10 pc.
Ag/AgCl Cup-electrodes	with 50cm cable	DAGM052600	10 pc.
Ag/AgCl Cup-electrodes	with 100cm cable	DAGM102600	10 pc.
Ag/AgCl Cup-electrodes	with 150cm cable	DAGM152600	10 pc.
Ag/AgCl Cup-electrodes	with 200cm cable	DAGM202600	10 pc.
Ag/AgCl Cup-electrodes	with 250cm cable	DAGM252600	10 pc.

 1,5mm DIN plug

## Cup electrodes - gold

For easy using you get the casted golden cup electrodes with 10 different colored cables. Cables are made of teflon. Electrodes are autoclavable

Item details	Comments	Item number	PU
30cm cable	diameter 10mm	DGGOAT032600	10 pcs.
60cm cable	diameter 10mm	DGGOAT062600	10 pcs.
75cm cable	diameter 10mm	DGGOAT0752600	10 pcs.
120cm cable	diameter 10mm	DGGOAT122600	10 pcs.
150cm cable	diameter 10mm	DGGOAT152600	10 pcs.
180cm cable	diameter 10mm	DGGOAT182600	10 pcs.
200cm cable	diameter 10mm	DGGOAT202600	10 pcs.
240cm cable	diameter 10mm	DGGOAT242600	10 pcs.
300cm cable	diameter 10mm	DGGOAT302600	10 pcs.

 All electrodes also available with 2mm plug

 1,5mm DIN plug




diameter 10mm

# EEG-ACCESSORIES / Cup electrodes

**NEURO.CUP.**  
CUP ELECTRODES  
EEG EMG EP

## Disposable Ag/AgCl Cup electrodes

Disposable electrodes are an alternative to the traditional Ag/AgCl electrodes. The low cost enables these electrodes to be used for polygraph and EP conductance. The base material is made of plastic coated with a layer of Ag/AgCl.

Item details	Comments	Item number	PU
Cup electrodes	Ag/AgCl (disposable)	<b>DAGD00000</b>	500 pcs.
Cable 100cm	with 1,5mm DIN plug	<b>DECS102600</b>	10 pcs.
Cable 150cm	with 1,5mm DIN plug	<b>DECS152600</b>	10 pcs.
Connector	 1,5mm DIN plug		



Detailed illustration with connecting cable




Diameter 10mm



Diameter 10mm


## Silver-chlorinated disposable Cup electrode - with fixed connecting cable

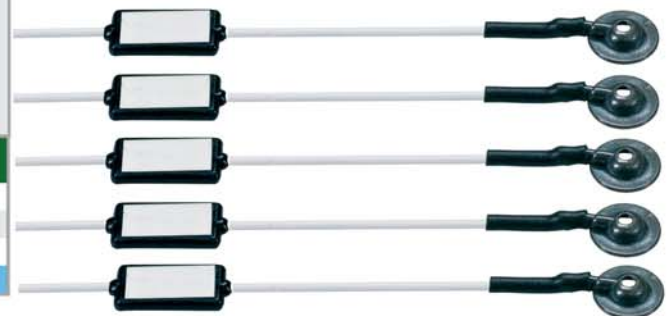
Silver-chlorinated disposable EEG Cup electrode with cables of various colours and contact-protected 1.5mm DIN plug.

Item details	Comments	Item number	PU
Disposable Cup electrode	with 100cm cable	<b>DAGD102600</b>	10 pcs.
Disposable Cup electrode	with 150cm cable	<b>DAGD152600</b>	10 pcs.
Disposable Cup electrode	with 200cm cable	<b>DAGD202600</b>	10 pcs.
Connector	 1,5mm DIN plug		

## Disposable MRI Ag/AgCl Cup-Electrode with fixed connecting cable - white

Due to safety concerns, MRI scans for patients fitted with pacemakers was not an option. MRI electrodes now make it possible for hundreds of thousands of such patients to benefit from MRI diagnostic techniques.

Item details	Comment	Item number	PU
Disposable Cup-Electrodes	with 100cm cable	<b>DAGR102600MRI</b>	1 pcs.
Disposable Cup-Electrodes	with 150cm cable	<b>DAGR152600MRI</b>	1 pcs.
Disposable Cup-Electrodes	with 200cm cable	<b>DAGR202600MRI</b>	1 pcs.
Connector	 1,5mm DIN plug		



Diameter 10mm

Other plug variations, cable lengths and colours on request.

## Disposable NetCap with external electrodes

This net cap, available in 4 sizes, is intended for single use only and offers optimum comfort.

The net cap has latex-free silicon rubber incorporated in its edge, which ensures that the cap fits correctly and is stable even without additional accessories. The electrodes, which can be divided, can be moved at any time without difficulty.



### Net cap disposable system cap in 4 sizes

Item details	Comments	Item number	PU
L 65 - 55cm	Adults	DCAPSOLAC2126	1 pc.
M 55 - 45cm	Young adults, women	DCAPSOMAC2126	1 pc.
S 45 - 35cm	Child	DCAPSOMIC2126	1 pc.
XS 35 - 25cm	Child	DCAPSOSIC2126	1 pc.



Detailed illustration



### Electrode cleaning

Wooden sticks with pointed and flat side, cotton buds or cleaning brushes for careful cleaning of electrodes.

Item details	Comments	Item number	PU
Wooden sticks	Pointed and flat side	E-26	100 pc.
Cleaning brushes	Synthetic fibres	PUL0000025	25 pc.
Wooden sticks	Extra-long handle	SWAPS	100 pc.

### Disposable gel syringe and blunt needles

For injecting electrolyte gel into the head caps and also cup electrodes.

Item details	Comments	Item number	PU
Syringe with 2 blunt needles	needle length 8mm	E-7	1 set
Gel syringes	Luer Lock	E-7B	125 pcs.
Blunt needles steel	needle length 25mm	DISP0002500	100 pcs.
Blunt needles steel	needle length 18mm	DISP0001800	100 pcs.
Blunt needles plastic	needle length 12mm	E-8BK-GRÜN	50 pc. + syringe
Blunt needles plastic	needle length 12mm	E-8BK-BRAUN	50 pc. + syringe
Syringe with 2 needles	needle length 12mm	E-7BK-BRAUN	1 set
Syringe with 2 needles	needle length 12mm	E-7BK-GRÜN	1 set



# EEG SYSTEM CAPS

## ADDITIONAL ELECTRODES AND ACCESSORIES

### Bio-potential electrode

Bio-potential electrode made of tin, gold and sintered AgCl, for use as additional electrode with 180cm connecting cable and 1.5mm DIN plug.

Item details	Comments	Item number	PU
Bio-potential electrode	Tin	E-17-Z-26	1 pc.
Bio-potential electrode	Gold	E-17-G-26	1 pc.
Bio-potential electrode	Sintered AgCl	E-17-AGCL-26	1 pc.



**INFO BOX**



The bio-potential electrode is also available with other plug variations on request.

BELT000...



### Chest belt for attaching caps

Chest belt for attaching EEG Caps using head bands.

Item details	Comments	Item number	PU
Blue	Length 120cm	BELT000120	1 pc.
Red	Length 95cm	BELT000095	1 pc.
Yellow	Length 70cm	BELT000070	1 pc.
Pink (Infra)	Length 40cm	BELT000040	1 pc.

### Head bands (elastic)

Adjustable elastic head bands for fixing Caps to the chest strap. Provide a secure fit.

Item details	Comments	Item number	PU
Head Band	Adults	HBA	1 pair
Head Band	Children	HBP	1 pair
Head Band	Neonatal	HBN	1 pair



HBA  
15-30cm  
2cm wide

TIRCUFF...



### Chin Strap (elastic)

Elastic chin straps for attaching MED Caps, Sleep Caps, Soft Cap and Cup Cap

Item details	Comments	Item number	PU
Chin Strap	Adult	TIRCUFFMENTA	1 set
Chin Strap	Pediatric	TIRCUFFMENTP	1 set
Chin Strap	Neonatal	TIRCUFFMENTN	1 set



## ACCESSORIES



### Head tape measure

Colour-coded special head tape measure for establishing the correct Head Cap size.

Item details	Comments	Item number	PU
Head tape measure	Adults	E-12	1 pc.
Head tape measure	InfCaps	I-3	1 pc.

### Foam rubber rings

The foam rubber rings with adhesive back reduce gel connections between electrodes and ensure better positioning of the cap, amongst other benefits.



Item details	Comments	Item number	PU
Foam rubber rings		E-6	100 pcs.



### Clamp electrodes

Clamp electrode with conducting surface in tin or AgCl for adults and children.

Item details	Comments	Item number	PU
Clamp electrode tin	Adults (red and black)	CLTA000MG	1 pair
Clamp electrode tin	Children (red and black)	CLTI000MG	1 pair
Clamp electrode AgCl	1-piece, met. Adult	CLAG0000	SET of 4
Clamp electrode AgCl	3-piece, met. Adult	CLAG0000M	SET of 4
Clamp electrode AgCl	3-piece, met. Child	CLAG0000M	SET of 4
Clamp electrode AgCl	3-piece, non-met. Adult	CLAG000BM	SET of 4

### NEUR Family

NeurPrep - Modern skin preparing gel  
 NEURGEL - flexible, highly conductive, saline and water-soluble gel  
 AC CREAM - Conductive contact cream

Item details	Comments	Item number	PU
NEURGEL SET	250g jar	NEURGEL250V-3	3 pcs.
NEURGEL	250g bottle	NEURGEL250F	1 pc.
AC CREAM	250g jar	ACCREAM250V-3	3 pcs.
NEURPREP	120g bottle	NPREP120T-3	3 pcs.



## ADDITIONAL ELECTRODES

### Additional electrodes

9mm standard electrode or 6mm child's electrode made of tin with 120cm cable.

Item details	Comments	Item number	PU
Additional electrode 6mm	with 1.5 mm DIN plug	E-21-6-Z-26	1 pc.
Additional electrode 6mm	with 2 mm plug	E-21-6-Z-21	1 pc.
Additional electrode 9mm	with 1.5 mm DIN plug	E-21-9-Z-26	1 pc.
Additional electrode 9mm	with 2 mm plug	E-21-9-Z-21	1 pc.
Electrode pads	to attach E-21	E-25	100 pcs.



### Quick Insert electrode

The Quick Insert Electrode with 120cm cable is used for all EEG Caps and HeadCaps as a temporary bridge to remedy a faulty system cap electrode.

Item details	Comments	Item number	PU
Tin	with 1.5mm DIN plug	E-4-Z-26	1 pc.
Tin	with 2mm plug	E-4-Z-21	1 pc.
Sintered Ag/Cl	with 1.5mm DIN plug	E-4-AGCL-26	1 pc.
Sintered Ag/Cl	with 2mm plug	E-4-AGCL-21	1 pc.

### TAB adhesive electrodes

Pre-pasted disposable surface TAB electrode for EKG. For use in conjunction with alligator clip cables.

Item details	Comments	Item number	PU
TAB electrode	20 x 20mm Ag/AgCl	E-27	100 pcs.
TAB electrode	20 x 20mm Tin	E-27-Z	100 pcs.
TAB electrode	22 x 20mm Ag/AgCl	TABSM0000001	100 pcs.
TAB electrode	14 x 22mm Ag/AgCl	TABSMPO00001	100 pcs.
SET: 3 Kabel á 20cm	Red, Green, Black	BEC02026C1GM	1 Set



E-27  
E-27-Z

TABSM0000024

TABSM0000014



BEC02026C1GM



### Ear electrode "GVB"

The new ear electrode shape is comfortable for patients because it can be adapted individually. The cable length is 100cm.

Item details	Comments	Item number	PU
Ear electrode, tin	with 1.5mm DIN plug	EAR1226TO-2	1 pair
Ear electrode, tin	with 2mm plug	EAR1221TO-2	1 pair
Ear electrode, gold	with 1.5mm DIN plug	EAR1026GO-2	1 pair
Ear electrode, gold	with 2mm plug	EAR1021GO-2	1 pair
Ear electrode, sintered	with 1.5mm DIN plug	EAR1026SO-2	1 pair
Ear electrode, sintered	with 2mm plug	EAR1021SO-2	1 pair

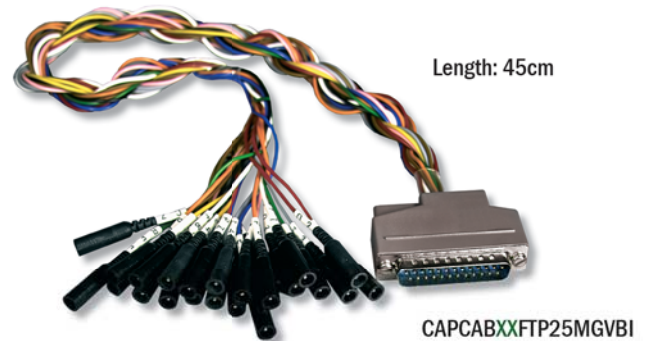
## ELECTRODE BOARD ADAPTER

### Adapter 1.5mm socket

Adapter for connecting MultiCaps with 20 - 25 x 1.5mm DIN socket on the electrode side and 25-channel plugboard on apparatus side

Item details	Comments	Item number	PU
Adapter	20 - 25 x 1,5mm DIN <b>socket</b> to 25 conn. plug	<b>CAPCABXXFTP25MGVBI</b>	1 pc.
Adapter	20 - 25 x 1,5mm DIN <b>plug</b> to 25 conn. plug	<b>CAPCABXX26GVBASMI</b>	1 pc.

Please replace **XX** in the item number with your desired number of pins



All adapters can be configured individually at any time to customer requirements. GVB geliMED offers adapters for all EEG apparatus currently on the market.

### INFO BOX



### Adapter for "Schwarzer" apparatus

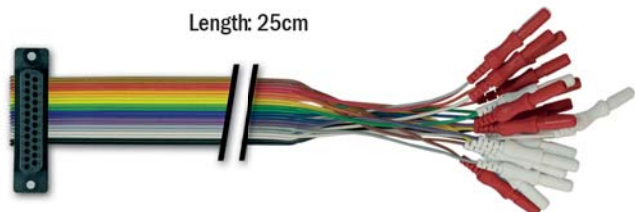
Special electrode board adapter for connecting electrodes individually to Schwarzer EEG apparatus which has a 37 or 50-channel plugboard. Other adapters for current EEG apparatus on request.

Item details	Comments	Item number	PU
Adapter (Illustration)	EPAS 24	<b>CAPCAB2537SW</b>	1 pc.
Adapter	EPAS 29	<b>CAPCAB2537SWER</b>	1 pc.
Adapter	National	<b>CAPCABR2550SW</b>	1 pc.
Adapter	International	<b>CAPCABR2550SWUS</b>	1 pc.

### Adapter 1.5mm plug

Electrode board adapter with 20 or 21 connections (20+ reference) with 1.5mm DIN plugs or 2 mm plugs to connect MultiCaps to EEG apparatus.

Item details	Comments	Item number	PU
Adapter 20 conn.	1.5 mm DIN plug	<b>CAPCAB2025F26</b>	1 pc.
Adapter 20 conn.	2 mm plug	<b>CAPCAB2025F21</b>	1 pc.
Adapter 21 conn.	1.5 mm DIN plug	<b>CAPCAB2125F26</b>	1 pc.
Adapter 21 conn.	2 mm plug	<b>CAPCAB2125F21</b>	1 pc.



# EEG-SYSTEM CAPS / Pastes and Gels



## EVERI

Preparing paste developed specifically to reduce the skin contact resistance. In preparation for use in EEG - EP - EMG - ECG

Item details	Comments	Item Number	PU
Skin preparing paste 160ml bottle		EVERY	1 btl.
Skin preparing paste 160ml bottle		EVERY-SET	24 btl.



## NEURPREP

Modern skin preparing gel (recommended for use in sensitive skin). No skin irritation, pleasing to the patients.

Item details	Comment	Item number	PU
Skin preparing paste 120g tube		NPREP120T-3	3 pcs.



## AC CREAM

AC Cream is a highly adherent, conductive contact cream. It is white, opaque and water soluble and has a pH of 6.6 up to 7.0.

Item details	Comments	Item Number	PU
AC CREAM	250g jar	ACCREAM250V-3	4 pcs.



## NEURGEL

Neurgel is a flexible, highly conductive, saline and water-soluble gel with a pH value of 6-7, which is especially for EEG, EMG, EP recordings were developed.

Item details	Comments	Item Number	PU
NEURGEL	250g bottle	NEURGEL250F	1 pc.
NEURGEL	250g jar	NEURGEL250V-3	3 pcs.



## SYNAPSE

For NASA developed EEG-contact cream, especially for routine check up and long-term monitoring.

Item details	Comments	Item Number	PU
SYNAPSE	140g bottle	SYNAPSE	1 pc.
SYNAPSE SET	140g bottle	SYNAPSE-S	12 pcs.



## EC-2

Specially developed adhesive conductive paste with excellent adhesion. In combination with our gold cup electrode this paste is ideal for long-term recording.

Item Details	Comments	Item Number	PU
EC-2	100g tube	EC-2	1 pc.
EC-2	100g tube	SEC-2	10 pcs.



# EEG-SYSTEM CAPS / Pastes and Gels



## IVORY wash lotion for system caps

Recommend detergent for caps, as opposed to other conventional products which may leave residue on the electrode material.

Item details	Comments	Item Number	PU
IVORY wash lotion	700ml bottle	E-16-F	1 pc.



## GIGASEPT

Liquid disinfectant with cleaning effect.

Item details	Comments	Item Number	PU
GIGASEPT	2l canister	GIGASEPT-FFneu-2L	1 can.
GIGASEPT	5l canister	GIGASEPT-FFneu-5L	1 can.



## Korsolex med AF

Aldehyd free disinfectant

Item details	Comments	Item number	PU
Disinfectant	2l bottle	KORSOLEX-2L	1 pc.
Disinfectant	5l canister	KORSOLEX-5L	1 pc.



## Product informations - Test review about CT-suitable pastes and gels

We have had requests from various people to provide information on the CT compatibility of our pastes and gels. As such information was not readily available or very limited, we conducted a study to establish the CT compatibility for a range of products.

We would like to take this opportunity to present the results of this study:



**Ten20**  
Conductive paste      not visible,  
no artefacts



**NEURGEL**  
Saline gel              inappropriate,  
artefacts



**ELEFIX**  
Conductive paste      visible,  
no artefacts



**AC-CREAM**  
Conductive paste      visible,  
no artefacts



**SYNAPSE**  
Conductive creme      visible,  
no artefacts



**EC-2**  
Conductive paste      inappropriate,  
artefacts

**Worldwide**



EEEG CAPS

**MEDICAL DIAGNOSTIC PRODUCT WORLD**  
Product Catalogue

**GVB-SPES**

**IOM**  
Intraoperative Monitoring  
Neurosurgical Accessories

**B-SPES**

**Polysomnography**

**GVB-SPES**

The entire product range online at:  
<http://www.gvb-gelimed.com>

GVB-geliMED  
Ginsterweg 4a  
23795 Bad Segeberg  
Phn: +49 (0) 45 51 - 95 67 30  
[export@gvb-gelimed.com](mailto:export@gvb-gelimed.com)