

Natus® InVisus™ Ultrasound System

Technical Specifications

Tablet Physical Specifications

Size (HxWxD)	13 x 19 x 5.2 cm (5.1 x 7.5 x 0.8 in)
Weight	600 g (1.3 lbs)

Tablet General Specifications

Screen Resolution	1280 x 800 px
Screen Technology	TFT LED
Screen Size	7 in (17.8 cm)
Screen Frequency	60 Hz
Storage Capabilities	>40,000 images
Storage Size	128 GB
Storage Type	SD
Export Type	USB
Connections	micro USB, micro HDMI
Integrated Speaker	Yes
Available file formats	JPG, PNG, AVI, DICOM

General Specifications

Protection Type	BF
Class	Ila
IP Level	IPX0
Noise Level	35 dB
(Note: Noise Level reflects noise when cooling fans are active.)	
Base Unit Fuse Type and Rating	Type T, 1.6A / 250V

Environmental Limits

Operating Environmental Limits

Temperature Range	5° – 35° C (41° – 95° F)
Pressure Range	700 – 1060 hPa
Humidity Range	30% – 80%

Transport and Storage

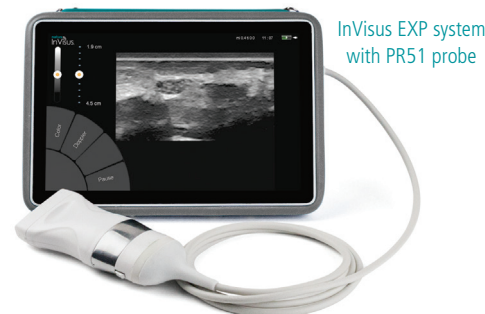
Temperature Range	-10° – 60° C (14° – 140° F)
Atmospheric Pressure Range	700 – 1060 hPa
Humidity Range	10% – 85%

Tablet Electrical Specifications

Voltage Supported	80 -275 VAC, 47 – 63 Hz
Power	20 W
Output	5 VDC, 4A

Ultrasound Specifications

Highest Working Frequency	18 MHz
Grey Level	256
Image Matrix Size	512 x 512 px
Dynamic Range	150 dB
Image Matrix Depth	18 Bits
Maximum Frame Rate	>25fps



InVisus EXP system with PR51 probe

Probe Specifications

InVisus SLP Model Probe

Probe Elements	128
Probe Length	40 mm (1.6 in)
Probe Frequency Range	5 – 12.5 MHz
Transducer Material	Piezo, Composite
Probe Geometry	Linear

InVisus EXP Model Probes

PR51 Probe

Probe Elements	192
Probe Length	40 mm (1.6 in)
Probe Frequency Range	10 – 18 MHz
Transducer Material	Piezo, Composite
Probe Geometry	Linear

PR52 Probe

Probe Elements	256
Probe Length	50 mm (2 in)
Probe Frequency Range	6 – 18 MHz
Transducer Material	Piezo, Composite
Probe Geometry	Linear

Imaging Modes

B-Mode, M-Mode, PW Mode, Color Doppler, Power Doppler, Harmonic Imaging, Compound Imaging

B-Mode

Available Adjustments	Gain
Zoom	Up to 32x
Maximum Depth	31 cm

PW Mode

PRF Range	200 Hz – 10 kHz
Minimal Flow Speed	0.02 m/s
Maximal Flow Speed	3 m/s
Maximal PW Line Angle	20°
Available Adjustments	Gain, Baseline, Angle

Color Doppler

Number of Colors Displayed	262, 144
Minimal Flow Speed	0.01 m/s
Maximal Flow Speed	2 m/s
Available Adjustments	Gain, Pulse Repetition Frequency (PRF), Steering Angle

Measurement Types

2D Measurements	Distance, Area, Volume
PW Measurements	Pulsatility Index (PI), Resistive Index (RI), Ration Peak Velocity at Systole/ Velocity at Diastole (S/D), Heart Rate (HR)

Quality Standards

Manufactured, designed, developed, and marketed under ISO 13485:2012 + AC:2012 Certified Quality System.

Compliance/Regulatory Standards

Designed, tested, manufactured and certified to meet the following Medical Electrical Equipment Standards:

EN 60601-1:2006 + AC:2010 + A1:2013
EN 60601-1-1:2001
EN 60601-1-2:2007 + AC:2010
EN 60601-1-6:2010
EN 60601-2-37:2008

European Community (CE Mark)

Medical Device Directive (MDD) product certified to comply to EC Directive 93/42/EEC

Natus Neuro

3150 Pleasant View Road
Middleton, WI 53562 USA
Tel: 1-800-356-0007
1-608-829-8500
Fax: 1-608-829-8709

www.natus.com